

CD147 (soluble) Monoclonal Antibody (MEM-M6/6)

Product Details	
Size	100 µg
Species Reactivity	Human
Published Species	Human
Host/Isotype	Mouse / IgG1
Class	Monoclonal
Type	Antibody
Clone	MEM-M6/6
Conjugate	Unconjugated
Immunogen	Protein A-CR purified soluble recombinant form of CD147, CD147Rg, which consists of the cDNA coding for the hinge region, CH2-and CH3 domain of human IgG1 (CD147Rg is secreted by transfectants as a dimer).
Form	Liquid
Concentration	1 mg/mL
Purification	Protein A
Storage buffer	PBS, pH 7.4
Contains	no preservative
Storage conditions	4°C, do not freeze
RRID	AB_11157679

Applications	Tested Dilution	Publications
Western Blot (WB)	Assay-dependent	-
Flow Cytometry (Flow)	1-4 µg/mL	-
ELISA (ELISA)	-	1 Publication
Functional Assay (Functional)	Assay-dependent	-

Product Specific Information

This antibody recognizes extracellular Ig domain D2 (membrane proximal) of CD147 (Neurothelin), a 50-60 kDa type I transmembrane glycoprotein primarily expressed on all leukocytes, red blood cells, platelets and endothelial cells; it is not expressed by resting lymphocytes.

Endotoxin level is less than 0.01 EU/ug of the protein, as determined by the LAL test.

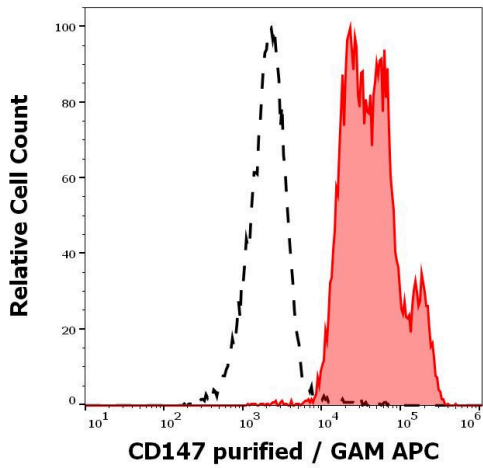
Western blotting should be performed under non-reducing conditions with a positive control of 293 human fibroblastoid cells.

Functional Application: Inhibition.

Product Images For CD147 (soluble) Monoclonal Antibody (MEM-M6/6)

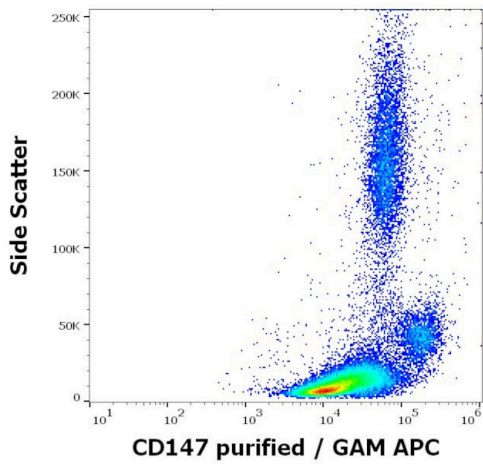
CD147 (soluble) Antibody (MA1-10103) in Flow

Flow Cytometry analysis of CD147 using CD147 (soluble) Monoclonal Antibody (MEM-M6/6) (Product # MA1-10103). Separation of leukocytes stained using anti-human CD147 (MEM-M6/6) purified antibody (concentration in sample 0.6 g/mL, GAM APC, red-filled) from leukocytes cells unstained by primary antibody (GAM APC, black-dashed) in flow cytometry analysis (surface staining).



CD147 (soluble) Antibody (MA1-10103) in Flow

Flow Cytometry analysis of CD147 using CD147 (soluble) Monoclonal Antibody (MEM-M6/6) (Product # MA1-10103). Flow cytometry surface staining pattern of human peripheral whole blood stained using anti-human CD147 (MEM-M6/6) purified antibody (concentration in sample 0.6 g/mL, GAM APC).



1 Reference

ELISA (1)

Cell reports

Transmembrane Protease TMPRSS11B Promotes Lung Cancer Growth by Enhancing Lactate Export and Glycolytic Metabolism.

"MA1-10103 was used in Enzyme-linked immunosorbent assay to identify the transmembrane serine protease TMPRSS11B as a gene that promotes transformation of immortalised human bronchial epithelial cells."

Authors: Updegraff BL, Zhou X, Guo Y, Padanad MS, Chen PH, Yang C, Sudderth J, Rodriguez-Tirado C, Girard L, Minna JD, Mishra P, DeBerardinis RJ, O'Donnell KA

Year
2018

Species
Human

For Research Use Only. Not for use in diagnostic procedures. Not for resale without express authorization. Products are warranted to operate or perform substantially in conformance with published Product specifications in effect at the time of sale, as set forth in the Production documentation, specifications and/or accompanying package inserts ("Documentation"). No claim of suitability for use in applications regulated by FDA is made. The warranty provided herein is valid only when used by properly trained individuals. Unless otherwise stated in the Documentation, this warranty is limited to one year from date of shipment when the Product is subjected to normal, proper and intended usage. This warranty does not extend to anyone other than the Buyer. Any model or sample furnished to Buyer is merely illustrative of the general type and quality of goods and does not represent that any Product will conform to such model or sample. NO OTHER WARRANTIES, EXPRESS OR IMPLIED, ARE GRANTED INCLUDING WITHOUT LIMITATION, IMPLIED WARRANTIES OF MERCHANTABILITY, FITNESS FOR ANY PARTICULAR PURPOSE, OR NON INFRINGEMENT. BUYER'S EXCLUSIVE REMEDY FOR NON-CONFORMING PRODUCTS DURING THE WARRANTY PERIOD IS LIMITED TO REPAIR, REPLACEMENT OF OR REFUND FOR THE NON-CONFORMING PRODUCT(S) AT SELLER'S SOLE OPTION. THERE IS NO OBLIGATION TO REPAIR, REPLACE OR REFUND FOR PRODUCTS AS THE RESULT OF (I) ACCIDENT, DISASTER OR EVENT OF FORCE MAJEURE, (II) MISUSE, FAULT OR NEGLIGENCE OF OR BY BUYER, (III) USE OF THE PRODUCTS IN A MANNER FOR WHICH THEY WERE NOT DESIGNED, OR (IV) IMPROPER STORAGE AND HANDLING OF THE PRODUCTS. Unless otherwise expressly stated on the Product or in the documentation accompanying the Product, the Product is intended for research only and is not to be used for any other purpose, including without limitation, unauthorized commercial uses, in vitro diagnostic uses, ex vivo or in vivo therapeutic uses, or any type of consumption by or application to human or animals.