

# Benchtop Low-speed Large-capacity Centrifuge

## LX-60T500-J



### Scope of Application :

It is widely used in fields such as life sciences, biology, medical research, pharmaceuticals, geology, agriculture and forestry, petrochemicals, light industry, and metal particles, for rapid separation and extraction of trace samples.

It also serves as IVD lab equipment for separating human blood, used in diagnostic tests like hematological, immunological screening, and cardiovascular assessment.



Wide range of rotors for application flexibility, compatible with tubes/bottles from 0.2 ml to 500ml.



Patented anti-seismic door lock



Real time loading imbalance detection, immediate shutdown protection in case of imbalance

#### Qingdao Haier Biomedical Technology Co., Ltd.

No.280 Feng Yuan Road, High-tech Zone,  
Qingdao, 266111, P.R. China

E-mail: [inquiry@haierbiomedical.com](mailto:inquiry@haierbiomedical.com)  
Website: [www.haiermedical.com](http://www.haiermedical.com)

23-07-2025\_v2



Haier Biomedical  
International



Haier Biomedical  
International



@haiermedicalint



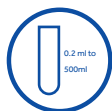
Haier Biomedical  
International



Haier Biomedical  
International



## Product Features



Wide range of rotors for application flexibility, compatible with tubes/bottles from 0.2 ml to 500ml



Automatic rotor identification with over speed protection



Use of brushless induction motors to provide maintenance-free operation, eliminating carbon particle emissions



Real time loading imbalance detection, immediate shutdown protection in case of imbalance



Optimized sound design for low noise levels( $\leq 63\text{dB(A)}$ )



## Intuitive Interface



LCD keypad and control knob for easy operation, the wide viewing angle more comfortable and practical for users of all heights



Quick recall of up to 99 programs for quick run start by routine users



9 acceleration + 10 deceleration stages



The speed, centrifugal force, and time can be changed during the centrifugation process

Target speed/centrifugal force/time and real-time operation data display

Screen lock function to prevent press errors



One key to recall stored programs for more convenient operation

Acceleration/Deceleration rates



## Product Parts



Patented anti-seismic door lock. In case of abnormal vibration, the cover can be locked reliably



Gas springs with safety protection



Triple-layer construction to ensure safe use



Unique air duct structure design, the heat inside the centrifugal chamber can dissipate quickly



316 stainless steel centrifuge chamber is rust-free and easy to clean



Emergency lid release, pry out the white plastic plug on the side plate with a tool and pull the attached release cord to open the lid



## Key Features of Quick-Flip Biocontainment Safety Lids

- Quick-Flip Hinge Design**  
Our hinged lids do not need to be removed from the rotor. Just a quick flip gives you fast access to your samples
- Low-Pressure Closing Clip**  
The simple low-pressure clip offers a secure closure with an audible "click" and visual cues, enhancing safety and replacing multi-turn screw caps or complex lever systems
- Ambidextrous & Glove-Friendly**  
Designed for ease of use, our lids can be operated with either hand and are glove-friendly, ensuring seamless operation
- Premium Polymer Construction**  
Made from Polyetherimide (PEI), our lids provide excellent chemical resistance, transparency, and durability
- Certified Safety and Reliability**  
Independently tested and certified per IEC-61010 Section 2-020 Annex AA, ensuring top-level safety and performance



Choose our Quick-Flip biocontainment safety lids for innovative, safe, and durable lab solutions.



## Specifications

Model	Maximum Capacity	Speed Range (rpm)	Max RCF(xg)	Speed Accuracy (rpm)	Time Setting Range	Display	Noise Level (dB(A))	Power Supply (V/Hz)					
LX-60T500-J	4*500ml	500~6,000	5,353	±10	1s-99h/59min (1s/1min increment)	LCD	≤63	220~240/50/60					
Power(W)		Exterior Dimensions (W*D*H)(mm)		Lid Opening Height (mm)		Net Weight (kg)		Packing Dimensions (W*D*H)(mm)		Gross Weight (kg)		Certifications	
700		478*624*365		840		60		560*752*562		75		CE	

Laboratory centrifuges contain fluorinated greenhouse gases in the sealing equipment.

## Fixed-Angle Rotor



BE No.	BE12DA000	BE12D7000	BE12C8000	BE12D8000	BE12D9000	BE12DQ000
Type	Steel sleeve	Steel sleeve	Steel sleeve	Steel sleeve	Steel sleeve	Steel sleeve
Max Capacity	6*50 (15)ml	12*50 (15)ml	12*15ml	42*15ml	10*100ml	60*10ml
Max RCF (xg)	5,353	4,528	5,353	4,528	3,260	2,576
Max Speed (rpm)	6,000	5,000	6,000	5,000	4,500	4,000
Max Tubes Per Rotor	6 pcs(50ml) 6 pcs(15ml)	12 pcs(50ml) 12 pcs(15ml)	12	42	10	60
Tube						
Max Tube Capacity (ml)	50 (15)ml	50 (15)ml	15ml	15ml	100ml	10ml
Max Tube Dimensions (Ø x L mm)	29*118 17*121	29*118 17*121	17*121	17*121	41*120	15*106
Tube Type	Round/Conical bottom	Round/Conical bottom	Round/Conical bottom	Round/Conical bottom	Round bottom	Large blood collection tube (Ø15mm)

### Adapter(Sets of 50) for BE12DQ000

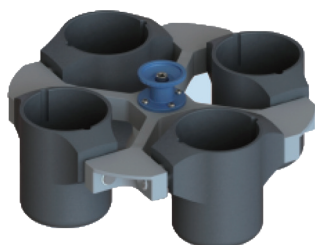
BE No.	BE12JN001
Max Capacity (ml)	5
Tube	
Max Tube Dimensions (Ø x L mm)	13*75
Tube Type	Small blood collection tube







## Swing-Out Rotor



Swing-Out Rotor  
with Round Buckets

Swing-Out  
Rotor Block

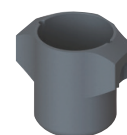


BE No. BE12FK001

Max. RCF (xg) 3,184

Max. speed (rpm) 4,000

Round Bucket  
(Sets of 4)



BE No. BE12G0000

Max Capacity (ml) 500

Bucket Type Flat bottom



Swing-Out Rotor with  
Biocontainment Round  
Buckets

Swing-Out  
Rotor Block

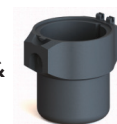


BE No. BE12FK001

Max. RCF (xg) 3,184

Max. speed (rpm) 4,000

Round Bucket &  
Lid (Sets of 4)



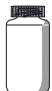




BE12G8000 BE12J2004

Max Capacity (ml) 500 NA

Bucket Type Flat bottom NA

Adapter (Sets of 4)  
for BE12G0000, BE12G8000







BE No.	No Adapter Needed	BE12JP001	BE12FG001	BE12FF001	BE12JS001
Max Capacity	500ml	250ml	225ml	100ml	4*50ml
Tubes Per Adapter/Rotor	4	1/4	1/4	1/4	4/16
Tube					
Max Tube Dimensions (Ø x L mm)	80*136	62*123	60*136	38*120	29*118
Tube Type	Flat bottom	Flat bottom	Conical bottom	Round bottom	Conical bottom

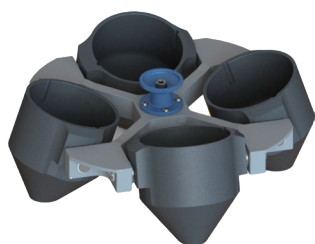


Adapter (Sets of 4)  
for BE12G0000, BE12G8000



BE No.	BE12JR001	BE12JQ001	BE12JD002	BE12JE002
Max Capacity	10*15ml	14*10ml	19*5/7ml	30*1.5ml
Tubes Per Adapter/Rotor	10/40	14/56	19/76	30/120
Tube				
Maximum Tube Dimensions (Ø x L mm)	17*121	16*106	13*75/106	11*38
Tube Type	Conical bottom	Large blood collection tube (Ø16mm)	Short/Long blood collection tube	Round/Conical bottom

\*Haier Biomedical also can provide 0.2ml adapter (sets of 24) (BE12J2003) , 0.5ml adapter (sets of 24) (BE12JN002) for 1.5/2ml tube rotor.



Swing-Out Rotor  
with Conical Buckets

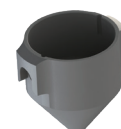
Swing-Out  
Rotor Block



BE No.	BE12FK001
Max. RCF (xg)	3,506
Max. speed (rpm)	4,000





Conical Bucket  
(Sets of 4)

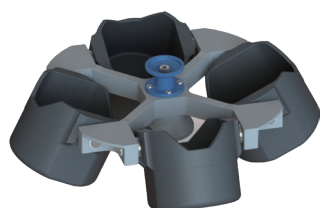


BE No.	BE12G1000
Max Capacity (ml)	500
Bucket Type	Conical bottom

Adapter (Sets of 4)  
for BE12G1000



BE No.	No adapter needed	BE12JB002
Max Capacity (ml)	500	250
Tubes Per Adapter/Rotor	4	1/4
Tube		
Max Tube Dimensions (Ø x L mm)	96*150	60*165
Tube Type	Conical bottom	Conical bottom

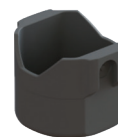


Swing-Out Rotor  
with Square Buckets

Swing-Out  
Rotor Block



Square Bucket  
(Sets of 4)




BE No.	BE12FK001
Max. RCF (xg)	3,184
Max. speed (rpm)	4,000



BE No.	BE12HA000
Max Capacity (ml)	500
Bucket Type	Flat bottom

Decap Adapter (Sets of 4)  
for BE12HA000



BE No.	BE12JV001
Max Capacity	24*5/7ml
Tubes Per Adapter/Rotor	24/96
Tube	
Max Tube Dimensions (Ø x L mm)	13*75/106
Tube Type	Short/Long blood collection tube



Swing-Out Rotor  
with Plate Buckets

Swing-Out  
Rotor Block



Plate Bucket  
(Sets of 4)

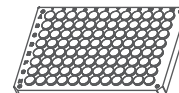
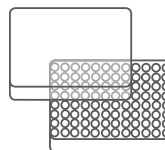
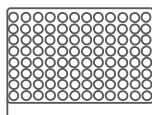


BE No.	BE12FK001
Max. RCF (xg)	2,612
Max. speed (rpm)	4,000



BE No.	BE12H5000
Max Capacity	1 plate
Bucket Type	Rectangular bottom

Plates for  
BE12H5000



Plates per rotor	4	4	4
W*D*H (mm)	128*86*15	128*86*17.5	128*86*20
Plate Type	MTP (without lid)	MTP (with lid)	PCR plate 96-fold