

# Benchtop Multipurpose Refrigerated Centrifuge

## LX-155T500R



### Scope of Application

It is widely used in fields such as life sciences, biology, medical research, pharmaceuticals, geology, agriculture and forestry, petrochemicals, light industry, and metal particles, for rapid separation and extraction of trace samples.

It also serves as IVD lab equipment for separating human blood, used in diagnostic tests like hematological, immunological screening, and cardiovascular assessment.



Optimized sound design for low noise levels ( $\leq 55\text{dB(A)}$ )



Short pre-cooling time and precise temperature control performance



Real time loading imbalance detection, immediate shutdown protection in case of imbalance

**Qingdao Haier Biomedical Technology Co., Ltd.**

No.280 Feng Yuan Road, High-tech Zone,  
Qingdao, 266111, P.R. China  
E-mail: [inquiry@haierbiomedical.com](mailto:inquiry@haierbiomedical.com)  
Website: [www.haiermedical.com](http://www.haiermedical.com)



Haier Biomedical  
International



Haier Biomedical  
International



@haiermedicalint



Haier Biomedical  
International



Haier Biomedical  
International



## Product Features



Short pre-cooling time and precise temperature control performance



Optimized sound design for low noise levels ( $\leq 55\text{dB(A)}$ )



Wide range of rotors for application flexibility, compatible with tubes/bottles from 0.2 ml to 500ml



Automatic radio-frequency rotor identification (RFID) with over speed protection



Use of brushless induction motors to provide maintenance-free operation, eliminating carbon particle emissions



Real time loading imbalance detection, immediate shutdown protection in case of imbalance



ECO shut-off function reduce energy consumption and extend compressor life



Each rotor use frequency monitoring to guarantee maximum operational safety

## Intuitive Interface



The 7-inch 45° glove-friendly touchscreen, the wide viewing angle more comfortable and practical for users of all heights



Equipped with user login and password protection, ensuring individualized program data management for each user



Quick recall feature for over 1000+ programs, minimizing time between runs and facilitating quick starts for routine users



The speed, centrifugal force, time and temperature can be changed by user during the centrifugation process



9 acceleration+ 10 deceleration stages

Acceleration/  
Deceleration  
setting.

Target speed/  
centrifugal force  
and real-time  
speed display.



Temperature set-point  
and real-time temperature  
display.

Quick access to stored  
programs. 1000+ program  
storage, supports customized  
programs for convenient.

Clear one-touch buttons for fast refrigeration,  
fast centrifugation,  
intelligent start-stop and lid-closing status.



## Product Parts



Intelligent lid locking monitoring and automatic self-locking to ensure safe operation



Gas Spring with safety protection



Drainage tray to prevent internal water accumulation and improve corrosion resistance



Triple-layer construction to ensure safe use



316 stainless steel centrifuge chamber is rust-free and easy to clean



USB port for exporting operation record including speed, time and temperature, operation curve with alarm messages etc



Emergency lid release, pry out the white plastic plug on the side plate with a tool and pull the attached release cord at least 7 times to open the lid



## Key Features of Quick-Flip Biocontainment Safety Lids

- Quick-Flip Hinge Design**  
Our hinged lids do not need to be removed from the rotor. Just a quick flip gives you fast access to your samples
- Low-Pressure Closing Clip**  
The simple low-pressure clip offers a secure closure with an audible "click" and visual cues, enhancing safety and replacing multi-turn screw caps or complex lever systems
- Ambidextrous & Glove-Friendly**  
Designed for ease of use, our lids can be operated with either hand and are glove-friendly, ensuring seamless operation
- Premium Polymer Construction**  
Made from Polyetherimide (PEI), our lids provide excellent chemical resistance, transparency, and durability
- Certified Safety and Reliability**  
Independently tested and certified per IEC-61010 Section 2-020 Annex AA, ensuring top-level safety and performance

Choose our Quick-Flip biocontainment safety lids for innovative, safe, and durable lab solutions.





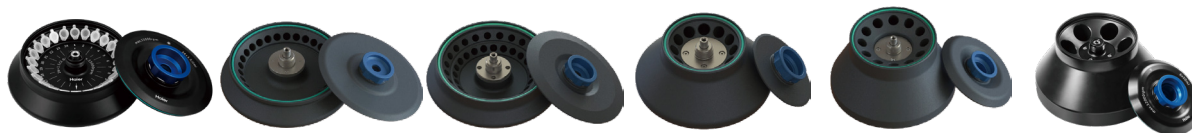
## Specifications

Model	Maximum Capacity	Speed Range (rpm)	Max RCF(xg)	Speed Accuracy (rpm)	Time Setting Range	Precooling Function	Temperature Setting Range(°C)	Display
LX-155T500R	4*500ml	500~15,500	26,322	±10	1s~99h59m59s (1-second increment)	Yes	-20~40, adjustable to 1	7 inch touch screen
Noise Level (dB(A))	Power Supply (V/Hz)	Power(W)	Exterior Dimensions (W*D*H)(mm)	Lid Opening Height(mm)	Net Weight (kg)	Packing Dimensions (W*D*H)(mm)	Gross Weight(kg)	Certifications
≤55	220-240/50/60	1200	658*673*358	860	112	741*799*555	133	CE

Laboratory centrifuges contain fluorinated greenhouse gases in the sealing equipment.



## Fixed-Angle Rotor




BE No.	BE12C9000	BE12CE000	BE12C7000	BE12DS000	BE12DT000	BE12DU000
Type	Sealed	Sealed	Sealed	Sealed	Sealed	Sealed
Max Capacity	24*1.5/2ml	30*1.5/2ml	48*1.5/2ml	12*10ml	12*15ml	6*50ml
Max RCF (xg)	23,100	26,322	22,132	16,071	21,912	17,065
Max Speed (rpm)	15,500	15,500	14,000	12,500	14,000	12,000
Max Tubes Per Rotor	24	30	48	12	12	6
Tube						
Max Tube Capacity (ml)	1.5/2ml	1.5/2ml	1.5/2ml	10ml	15ml	50ml
Max Tube Dimensions (Ø x L mm)	11*38	11*38	11*38	16*86	17*121	29 *105
Tube Type	Round /Conical bottom	Round /Conical bottom	Round /Conical bottom	Round bottom	Conical bottom	Round bottom

\*Haier Biomedical also can provide 0.2ml adapter (sets of 24) (BE12J2003), 0.5ml adapter (sets of 24) (BE12JN002) for 1.5/2ml tube rotor




## Fixed-Angle Rotor



BE No.	BE12DB000	BE12E5000	BE12DF000	BE12DG000	BE12DE000
Type	Sealed	Sealed	Steel sleeves	Steel sleeves	Steel sleeves
Max Capacity	6*50ml	12*8*0.2ml	42*15ml	12*50(15)ml	10*100ml
Max RCF (xg)	16,421	14,892	4,472	4,640	3,350
Max Speed (rpm)	12,000	12,000	5,000	5,000	4,500
Max Tubes Per Rotor	6	12	42	12pcs(50ml) 12pcs(15ml)	10
Tube					
Max Tube Capacity (ml)	50	0.2	15	50(15)	100
Max Tube Dimensions (Ø x L mm)	29*118	6*18	17*121	29*118 17*121	41*120
Tube Type	Conical bottom	PCR	Round/Conical bottom	Round/Conical bottom	Round bottom

### Adapter(Sets of 6) for BE12DB000

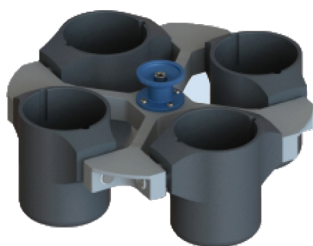
BE No.	BE12JC002
Max Capacity (ml)	15
Tube	
Max Tube Dimensions (Ø x L mm)	17*121
Tube Type	Conical bottom







## Swing-Out Rotor



Swing-Out Rotor  
with Round Buckets

Swing-Out  
Rotor Block



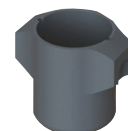
BE No. BE12FJ001

Max. RCF (xg) 3,184

Max. speed (rpm) 4,000



Round Bucket  
(Sets of 4)



BE No. BE12G0000

Max Capacity (ml) 500

Bucket Type Flat bottom



Swing-Out Rotor with  
Biocontainment Round  
Buckets

Swing-Out  
Rotor Block



BE No. BE12FJ001

Max. RCF (xg) 3,184

Max. speed (rpm) 4,000



Round Bucket &  
Lid (Sets of 4)




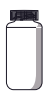
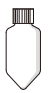


BE No. BE12G8000 BE12J2004

Max Capacity (ml) 500 NA

Bucket Type Flat bottom NA

Adapter (Sets of 4)  
for BE12G0000, BE12G8000







BE No.	No Adapter Needed	BE12JP001	BE12FG001	BE12FF001	BE12JS001
Max Capacity	500ml	250ml	225ml	100ml	4*50ml
Tubes Per Adapter/Rotor	4	1/4	1/4	1/4	4/16
Tube					
Max Tube Dimensions (Ø x L mm)	80*136	62*123	60*136	38*120	29*118
Tube Type	Flat bottom	Flat bottom	Conical bottom	Round bottom	Conical bottom



### Swing-Out Rotor

Adapter (Sets of 4)  
for BE12G0000, BE12G8000



BE No.	BE12JR001	BE12JQ001	BE12JD002	BE12JE002
Max Capacity	10*15ml	14*10ml	19*7/5ml	30*1.5/2ml
Tubes Per Adapter/Rotor	10/40	14/56	19/76	30/120
Tube				
Maximum Tube Dimensions (Ø x L mm)	17*121	16*106	13*75/106	11*38
Tube Type	Conical bottom	Large blood collection tube (Φ 16mm)	Short/Long blood collection tube	Round/Conical bottom

\*Haier Biomedical also can provide 0.2ml adapter (sets of 24) (BE12J2003), 0.5ml adapter (sets of 24) (BE12JN002) for 1.5/2ml tube rotor



Swing-Out Rotor with Plate Buckets

Swing-Out Rotor Block



Plate Bucket (Sets of 4)

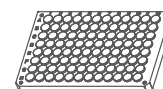
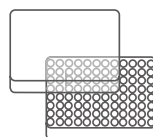
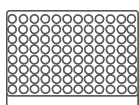


BE No.	BE12FJ001
Max. RCF (xg)	2,612
Max. speed (rpm)	4,000



BE No.	BE12H5000
Max Capacity	1 plate
Bucket Type	Rectangular bottom

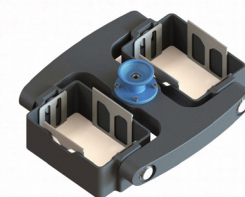
Plates for BE12H5000



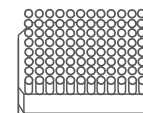
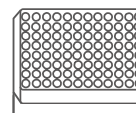
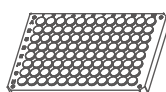
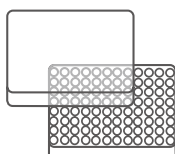
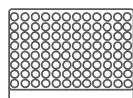
Plates per rotor	4	4	4
W*D*H (mm)	128*86*15	128*86*17.5	128*86*20
Plate Type	MTP (without lid)	MTP (with lid)	PCR plate 96-fold

Plate Swing-out Rotor

BE No.	BE12FQZ01
Max. RCF (xg)	2,381
Max. Speed (rpm)	4,000
Max Capacity	-
Bucket Type	Rectangular bottom Max height 60mm



Plates for BE12FQZ01



Plates per bucket/rotor	4/8	3/6	3/6	1/2	1/2
W*D*H (mm)	128*86*15	128*86*17.5	128*86*20	128*86*44.5	128*86*60
Plate Type	MTP (without lid)	MTP (with lid)	PCR plate 96-fold	DWP	Filter plate