

beta Catenin Recombinant Rabbit Monoclonal Antibody (6A3P2)

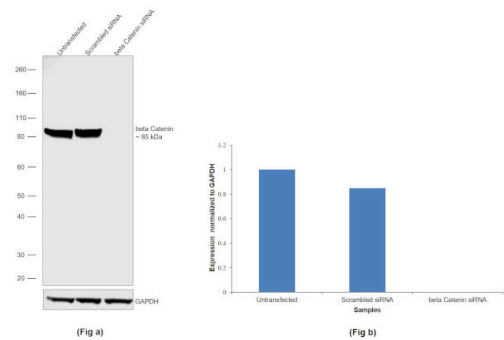
Product Details	
Size	100 µL
Species Reactivity	Human, Mouse, Rat
Host/Isotype	Rabbit / IgG
Expression system	HEK293 cells
Class	Recombinant Monoclonal
Type	Antibody
Clone	6A3P2
Conjugate	Unconjugated
Immunogen	A synthetic peptide corresponding to a sequence within amino acids 1-100 of human beta Catenin (P35222)
Form	Liquid
Concentration	1 mg/mL
Purification	Affinity Chromatography
Storage buffer	PBS, pH 7.3, with 50% glycerol, 0.05% BSA
Contains	0.05% ProClin 300
Storage conditions	-20° C, Avoid Freeze/Thaw Cycles
RRID	AB_2848867

Applications	Tested Dilution	Publications
Western Blot (WB)	1:500-1:1,000	1 Publication
Immunohistochemistry (Paraffin) (IHC (P))	1:50-1:200	-
Immunocytochemistry (ICC/IF)	1:50-1:200	-
ELISA (ELISA)	1 µg/mL	-
Immunoprecipitation (IP)	0.5 µg-4 µg antibody for 400 µg-600 µg extracts of	-

Product Specific Information

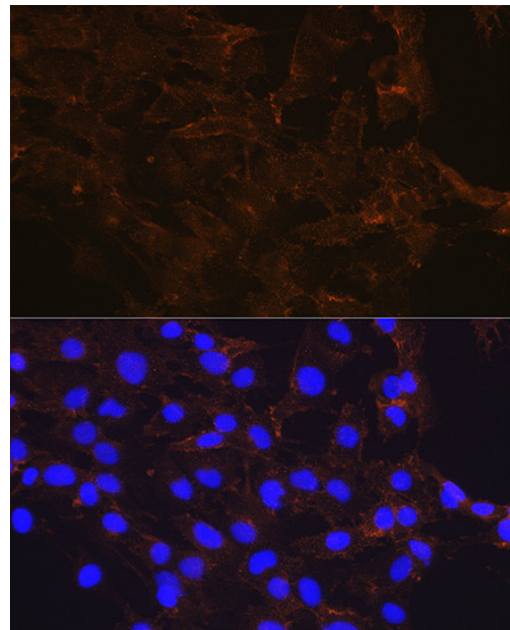
Immunogen sequence: MATQADLMEL DMAMEPDRKA AVSHWQQQSY LDSGIHSGAT TTAPSLSGKG NPEEEDVDTS QVLYEWEQGF SQSFTQEQVA DIDGQYAMTR AQRVRAAMFP

Product Images For beta Catenin Recombinant Rabbit Monoclonal Antibody (6A3P2)



beta Catenin Antibody (MA5-34961)

Antibody specificity was demonstrated by siRNA mediated knockdown of target protein. HeLa cells were transfected with CTNNB1 siRNA and decrease in signal intensity was observed in Western Blot application using beta Catenin Recombinant Rabbit Monoclonal Antibody (Product # MA5-34961). {KD}

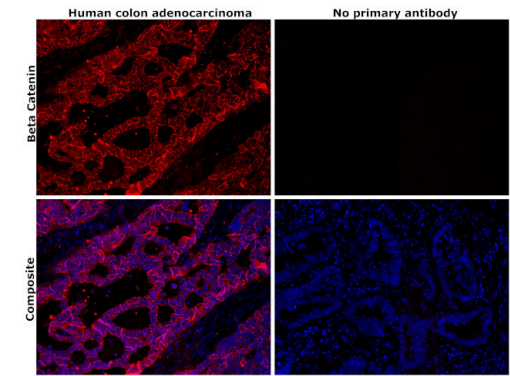


beta Catenin Antibody (MA5-34961) in ICC/IF

Immunofluorescence analysis of beta Catenin in C6 cells. Samples were incubated with beta Catenin Monoclonal antibody (Product # MA5-34961) using a dilution of 1:100 (40x lens). Blue: DAPI for nuclear staining.

beta Catenin Antibody (MA5-34961) in IHC (P)

Immunohistochemical analysis of Beta Catenin was performed using formalin-fixed paraffin-embedded human colon adenocarcinoma tissue sections. To expose the target protein, heat-induced epitope retrieval was performed on deparaffinized sections using eBioscience™ IHC Antigen Retrieval Solution - High pH (10X) (Product # 00-4956-58) diluted to 1X solution in water in a decloaking chamber at 110 degree Celsius for 15 minutes. Following antigen retrieval, the sections were blocked with 2% normal goat serum for 1 hour at room temperature and then probed with or without beta Catenin Recombinant Rabbit Monoclonal Antibody (6A3P2) (Product # MA5-34961) at 1:100 dilution in 0.1% normal goat serum overnight at 4 degree Celsius in a humidified chamber. Detection was performed using Goat anti-Rabbit IgG (H+L) Highly Cross-Adsorbed Secondary Antibody, Alexa Fluor™ Plus 647 (Product # A32733) at a dilution of 1:2,000 in 0.1% normal goat serum for 45 minutes at room temperature. ReadyProbes™ Tissue Autofluorescence Quenching Kit (Product # R37630) was used to quench autofluorescence from the tissues. Nuclei were stained with DAPI (Product # D1306) and the sections were mounted using ProLong™ Glass Antifade Mountant (Product # P36984). The images were captured on EVOS™ M7000 Imaging System (Product # AMF7000) at 20X magnification and externally deconvoluted.



View more figures on thermofisher.com

Western Blot (1)

International journal of molecular sciences

Year
2022

Isogenic Human-Induced Pluripotent Stem-Cell-Derived Cardiomyocytes Reveal Activation of Wnt Signaling Pathways Underlying Intrinsic Cardiac Abnormalities in Rett Syndrome.

"Published figure using beta Catenin recombinant monoclonal antibody (Product # MA5-34961) in Western Blot"

Authors: Ng KM,Ding Q,Tse YL,Chou OH,Lai WH,Au KW,Lau YM, Ji Y, Siu CW,Tang CS,Colman A,Tsang SY,Tse HF

For Research Use Only. Not for use in diagnostic procedures. Not for resale without express authorization. Products are warranted to operate or perform substantially in conformance with published Product specifications in effect at the time of sale, as set forth in the Production documentation, specifications and/or accompanying package inserts ("Documentation"). No claim of suitability for use in applications regulated by FDA is made. The warranty provided herein is valid only when used by properly trained individuals. Unless otherwise stated in the Documentation, this warranty is limited to one year from date of shipment when the Product is subjected to normal, proper and intended usage. This warranty does not extend to anyone other than the Buyer. Any model or sample furnished to Buyer is merely illustrative of the general type and quality of goods and does not represent that any Product will conform to such model or sample. NO OTHER WARRANTIES, EXPRESS OR IMPLIED, ARE GRANTED INCLUDING WITHOUT LIMITATION, IMPLIED WARRANTIES OF MERCHANTABILITY, FITNESS FOR ANY PARTICULAR PURPOSE, OR NON INFRINGEMENT. BUYER'S EXCLUSIVE REMEDY FOR NON-CONFORMING PRODUCTS DURING THE WARRANTY PERIOD IS LIMITED TO REPAIR, REPLACEMENT OF OR REFUND FOR THE NON-CONFORMING PRODUCT(S) AT SELLER'S SOLE OPTION. THERE IS NO OBLIGATION TO REPAIR, REPLACE OR REFUND FOR PRODUCTS AS THE RESULT OF (I) ACCIDENT, DISASTER OR EVENT OF FORCE MAJEURE, (II) MISUSE, FAULT OR NEGLIGENCE OF OR BY BUYER, (III) USE OF THE PRODUCTS IN A MANNER FOR WHICH THEY WERE NOT DESIGNED, OR (IV) IMPROPER STORAGE AND HANDLING OF THE PRODUCTS. Unless otherwise expressly stated on the Product or in the documentation accompanying the Product, the Product is intended for research only and is not to be used for any other purpose, including without limitation, unauthorized commercial uses, in vitro diagnostic uses, ex vivo or in vivo therapeutic uses, or any type of consumption by or application to human or animals.