

# Goat anti-Human IgG (Gamma chain) Cross-Adsorbed Secondary Antibody, HRP

Product Details	
Size	1 mL
Species Reactivity	Human
Host/Isotype	Goat / IgG
Class	Polyclonal
Type	Secondary Antibody
Conjugate	HRP
Immunogen	Gamma Immunoglobulin
Form	Liquid
Concentration	1 mg/mL
Purification	Affinity chromatography
Storage buffer	PBS, pH 7.4, with 4mg/mL BSA, 40% glycerol
Contains	0.19% Kathon™ CG
Storage conditions	4° C
RRID	AB_2533962

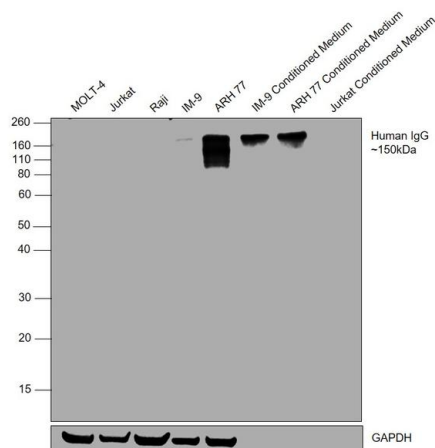
Applications	Tested Dilution	Publications
Western Blot (WB)	1:2,000-1:4,000	0 Publication
Immunohistochemistry (Paraffin) (IHC (P))	1:2,000-1:4,000	-
ELISA (ELISA)	1:2,000-1:4,000	0 Publication
Immunoprecipitation (IP)	1:2,000-1:4,000	-
Miscellaneous PubMed (Misc)	-	0 Publication

## Product Images For Goat anti-Human IgG (Gamma chain) Cross-Adsorbed Secondary Antibody, HRP



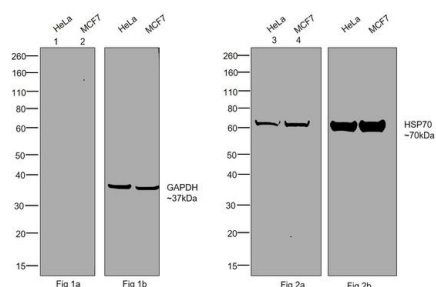
## Human IgG (Gamma chain) Cross-Adsorbed Secondary Antibody (62-8420) in WB

Western blot (non-reducing) was performed using Goat anti-Human IgG (Gamma chain) Cross-Adsorbed Secondary Antibody, HRP (Product # 62-8420) and a 150 kDa band corresponding to Human IgG was observed in IM-9, ARH-77 and IM-9, ARH-77 conditioned medium (CM) but not in Raji, Jurkat, Molt-4 and Jurkat CM which are known to have low expression. Whole cell lysate (30 µg) of MOLT-4 (Lane 1), Jurkat (Lane 2), Raji (Lane 3), IM-9 (Lane 4), ARH-77 (Lane 5), IM-9 CM (Lane 6), ARH-77 CM (Lane 7) and Jurkat CM (Lane 8) were electrophoresed using NuPAGE™ 4-12% Bis-Tris Protein Gel (Product # NP0322BOX). Resolved proteins were transferred onto a nitrocellulose membrane (Product # IB23001) by iBlot® 2 Dry Blotting System (Product # IB21001). The blot was probed with Goat anti-Human IgG (Gamma chain) Cross-Adsorbed Secondary Antibody, HRP (1 µg/mL) and detected by chemiluminescence using the iBright FL1500 (Product # A44115). Chemiluminescent detection was performed using Novex® ECL Chemiluminescent Substrate Reagent Kit (Product # WP20005). IM-9 and ARH-77 express and secrete IgG whereas Raji is known to express IgM. MOLT-4 and Jurkat (T-cell lines) do not express immunoglobulins (DOI:10.1002/eji.1830100305;10.3791/3573;10.1016/0022-1759(94)00286-6;PMID: 566614).



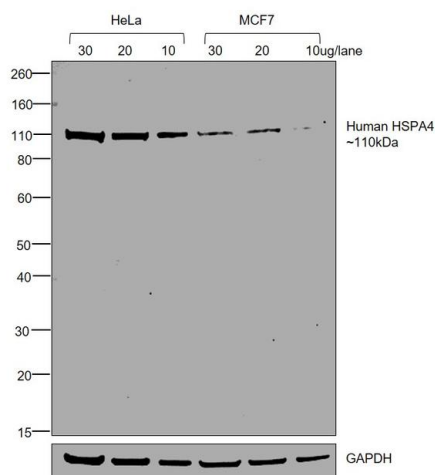
## Human IgG (Gamma chain) Cross-Adsorbed Secondary Antibody (62-8420) in WB

Western blot analysis was performed using Goat anti-Human IgG (Gamma chain) Cross-Adsorbed Secondary Antibody, HRP (Product # 62-8420). Whole cell extract (30 µg) of HeLa (Lane 1, 3) and MCF7 (Lane 2, 4) were electrophoresed using NuPAGE™ 4-12% Bis-Tris Protein Gel (Product # NP0322BOX). Resolved proteins were transferred onto a nitrocellulose membrane (Product # IB23001) by iBlot® 2 Dry Blotting System (Product # IB21001). The blot was probed with Mouse GAPDH Loading Control Monoclonal Antibody (Product # MA5-15738) (0.5 µg/mL) (Fig 1a,b) or Rabbit HSP70 polyclonal antibody (Product # PA5-28003) (Fig 2a,b). The blot was probed with Goat anti-Human IgG (Gamma chain) Cross-Adsorbed Secondary Antibody, HRP (1:20000 dilution) and detected by chemiluminescence using iBright FL1500 (Product # A44115) and SuperSignal™ West Pico PLUS Chemiluminescent Substrate (Product # 34580). Absence of detection of Mouse GAPDH (~37 kDa) and detection of Rabbit HSP70 (~70 kDa) (Fig 1a,2a) demonstrates the reactivity of Goat anti-Human IgG (Gamma chain) Cross-Adsorbed Secondary Antibody, HRP to Human and Rabbit species. As control, the blots were reprobed with Goat anti-Mouse IgG (Heavy Chain), Superclonal™ Recombinant Secondary Antibody, HRP (Product # A28177, 1:20000 dilution) (Fig 1b) or Goat anti-Rabbit IgG (Heavy Chain), Superclonal™ Recombinant Secondary Antibody, HRP (Product # A27036, 1:20000 dilution) (Fig 2b).



## Human IgG (Gamma chain) Cross-Adsorbed Secondary Antibody (62-8420) in WB

Western blot analysis was performed using Goat anti-Human IgG (Gamma chain) Cross-Adsorbed Secondary Antibody, HRP (Product # 62-8420). Whole cell extract of HeLa (30, 20, 10 µg) (Lane 1, 2, 3) and MCF7 (Lane 4, 5, 6) were electrophoresed using NuPAGE™ 4-12% Bis-Tris Protein Gel (Product # NP0322BOX). Resolved proteins were transferred onto a nitrocellulose membrane (Product # IB23001) by iBlot® 2 Dry Blotting System (Product # IB21001). The blot was probed with Human IgG anti-HSPA4 primary antibody (0.5 µg/mL) at 4 degree Celsius overnight. The blot was then probed with Goat anti-Human IgG (Gamma chain) Cross-Adsorbed Secondary Antibody, HRP (1:20000 dilution) and detected by chemiluminescence using iBright FL1500 (Product # A44115). Chemiluminescent detection was performed using SuperSignal™ West Pico PLUS Chemiluminescent Substrate (Product # 34580). Specificity of Goat anti-Human IgG (Gamma chain) Cross-Adsorbed Secondary Antibody, HRP (Product # 62-8420) towards Human IgG is demonstrated by the specific detection of band corresponding to HSPA4 (~110 kDa). Sensitivity of Goat anti-Human IgG (Gamma chain) Cross-Adsorbed Secondary Antibody, HRP (Product # 62-8420) is demonstrated by detection of HSPA4 (~110 kDa) across all three lysate concentrations (30, 20, 10 µg/lane).





[View more figures on thermofisher.com](#)

**74 References**

Novel Strategy of Antibody Affinity Maturation and Enhancement of Nucleolin-Mediated Antibody-Dependent Cellular Cytotoxicity Against Triple-Negative Breast Cancer. *Biotechnol J* (2025)

Induction of Fc-dependent functional antibodies against different variants of SARS-CoV-2 varies by vaccine type and prior infection. *Commun Med (Lond)* (2024)

Cross-neutralization of distant coronaviruses correlates with Spike S2-specific antibodies from immunocompetent and immunocompromised vaccinated SARS-CoV-2-infected patients *Research Square* (2024)

Enhanced and cross-reactive in vitro memory B cell response against Epstein-Barr virus nuclear antigen 1 in multiple sclerosis. *Front Immunol* (2024)

HIV-1 Vpr combats the PU.1-driven antiviral response in primary human macrophages. *Nat Commun* (2024)

For Research Use Only. Not for use in diagnostic procedures. Not for resale without express authorization. Products are warranted to operate or perform substantially in conformance with published Product specifications in effect at the time of sale, as set forth in the Production documentation, specifications and/or accompanying package inserts ("Documentation"). No claim of suitability for use in applications regulated by FDA is made. The warranty provided herein is valid only when used by properly trained individuals. Unless otherwise stated in the Documentation, this warranty is limited to one year from date of shipment when the Product is subjected to normal, proper and intended usage. This warranty does not extend to anyone other than the Buyer. Any model or sample furnished to Buyer is merely illustrative of the general type and quality of goods and does not represent that any Product will conform to such model or sample. NO OTHER WARRANTIES, EXPRESS OR IMPLIED, ARE GRANTED INCLUDING WITHOUT LIMITATION, IMPLIED WARRANTIES OF MERCHANTABILITY, FITNESS FOR ANY PARTICULAR PURPOSE, OR NON INFRINGEMENT. BUYER'S EXCLUSIVE REMEDY FOR NON-CONFORMING PRODUCTS DURING THE WARRANTY PERIOD IS LIMITED TO REPAIR, REPLACEMENT OF OR REFUND FOR THE NON-CONFORMING PRODUCT(S) AT SELLER'S SOLE OPTION. THERE IS NO OBLIGATION TO REPAIR, REPLACE OR REFUND FOR PRODUCTS AS THE RESULT OF (I) ACCIDENT, DISASTER OR EVENT OF FORCE MAJEURE, (II) MISUSE, FAULT OR NEGLIGENCE OF OR BY BUYER, (III) USE OF THE PRODUCTS IN A MANNER FOR WHICH THEY WERE NOT DESIGNED, OR (IV) IMPROPER STORAGE AND HANDLING OF THE PRODUCTS. Unless otherwise expressly stated on the Product or in the documentation accompanying the Product, the Product is intended for research only and is not to be used for any other purpose, including without limitation, unauthorized commercial uses, in vitro diagnostic uses, ex vivo or in vivo therapeutic uses, or any type of consumption by or application to human or animals.