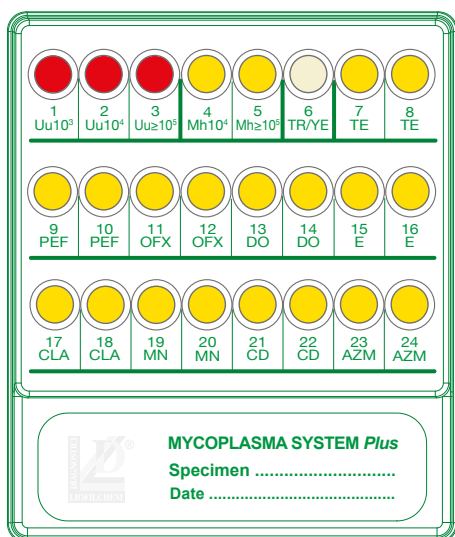


# MYCOPLASMA SYSTEM *Plus*

Count, Identification and Susceptibility Testing of urogenital mycoplasmas and *Candida* spp./*Trichomonas vaginalis* directly from Clinical Specimens



## ★ Clinical Specimens

Vaginal swab, Urethral swab,  
Rectal swab, Seminal fluid

## ★ Urogenital mycoplasmas

### Count/identification

*Ureaplasma urealyticum*, *Mycoplasma hominis*

### Susceptibility Testing (double concentration)

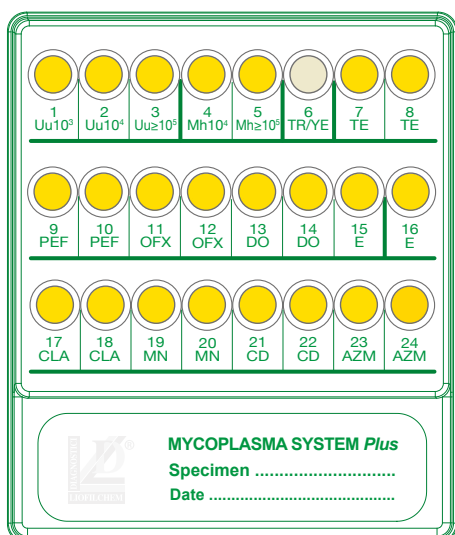
Tetracycline, Pefloxacin, Ofloxacin  
Doxycycline, Erythromycin, Clarithromycin,  
Minocycline, Clindamycin, Azithromycin

## ★ Direct Microbial Identification (microscopic observation)

*Candida* spp.,  
*Trichomonas vaginalis*

## ★ Benefits

- ✓ Complete diagnosis
- ✓ Save time and labor with direct testing
- ✓ Results in 24-48 hours
- ✓ Clear and well defined color changes
- ✓ Easy interpretation
- ✓ Automatic reading available

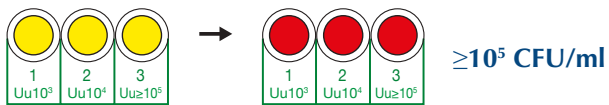
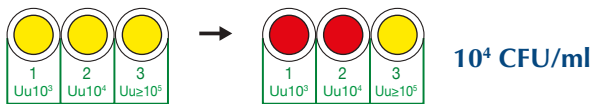
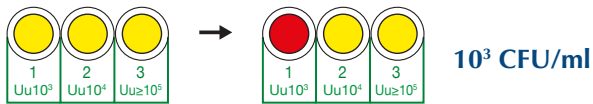


# MYCOPLASMA SYSTEM *Plus*

## RESULTS

### Identification and count

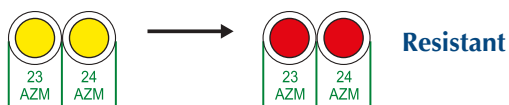
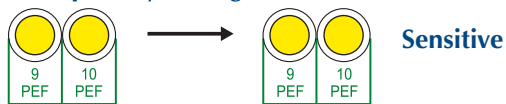
#### *Ureaplasma* spp.



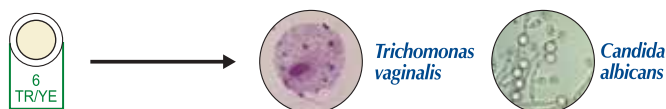
#### *Mycoplasma hominis*



#### Susceptibility Testing (double concentration)



### Microscopic observation (400x)



DESCRIPTION	PACKAGING	REF.
MYCOPLASMA SYSTEM <i>Plus</i>	20 tests	72592
MYCOPLASMA SYSTEM <i>Plus</i>	4 tests	79592
VASELINE OIL DROPPERS	10x10 mL	87006
MYCOPLASMA TRANSPORT <i>Broth</i>	20x6 mL	20158

## TEST PROCEDURE



**1**

- Dip the swab into the vial of physiological solution and wait 5 minutes. Carefully squeeze the swab against the vial wall.



**2**

- Dispense 0.2 mL of clinical sample suspension into each well of the system.



**3**

- Cover all the wells with 1 drop of Vaseline Oil, except 6-TR/YE well. Cover the system with the lid provided and incubate at 36±1°C for 18-24 hours.



**4**

- Confirm *Trichomonas vaginalis* and *Candida* spp. by taking a drop from well 6-TR/YE and watch at the microscope (400x).



**5**

- Watch for the color change of the wells and interpret the results.



**6**

- Note down the test results on the form provided in the kit, or read and interpret with **automatic readers**.