

CD24 Monoclonal Antibody (eBioSN3 (SN3 A5-2H10)), eFluor™ 450, eBioscience™

Product Details	
Size	100 Tests
Species Reactivity	Human
Published Species	Human, Mouse
Host/Isotype	Mouse / IgG1, kappa
Recommended Isotype Control	Mouse IgG1 kappa Isotype Control (P3.6.2.8.1), eFluor™ 450, eBioscience™
Class	Monoclonal
Type	Antibody
Clone	eBioSN3 (SN3 A5-2H10)
Conjugate	eFluor™ 450
Excitation/Emission Max	405/445 nm
Form	Liquid
Concentration	5 µL/Test
Purification	Affinity chromatography
Storage buffer	PBS, pH 7.2, with 0.2% BSA
Contains	0.09% sodium azide
Storage conditions	4° C, store in dark, DO NOT FREEZE!
RRID	AB_11219685

Applications	Tested Dilution	Publications
Immunocytochemistry (ICC/IF)	-	2 Publications
Flow Cytometry (Flow)	5 µL (0.25 µg)/test	22 Publications

Product Specific Information

Description: The eBioSN3 (SN3 A5-2H10) monoclonal antibody reacts with the human CD24 molecule, also known as Heat Stable Antigen (HAS). This 35-50 kDa molecule is anchored in the plasma membrane via phosphatidylinositol and is expressed by erythrocytes, thymocytes, peripheral lymphocytes and myeloid lineage. It has been reported that P-selectin (CD62P) binds to CD24.^M

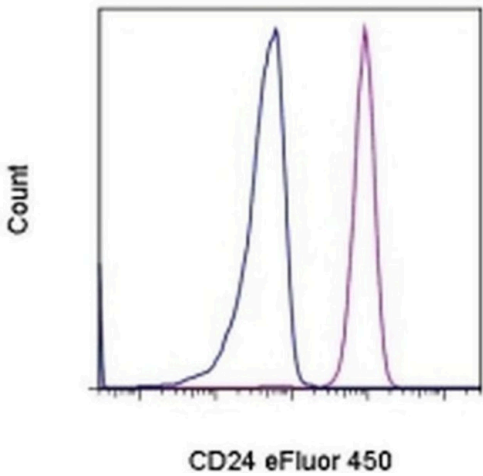
Applications Reported: This eBioSN3 (SN3 A5-2H10) antibody has been reported for use in flow cytometric analysis.^M

Applications Tested: This eBioSN3 (SN3 A5-2H10) antibody has been pre-titrated and tested by flow cytometric analysis of normal human peripheral blood cells. This can be used at 5 µL (0.25 µg) per test. A test is defined as the amount (µg) of antibody that will stain a cell sample in a final volume of 100 µL. Cell number should be determined empirically but can range from 10^5 to 10^8 cells/test. ^M

eFluor® 450 is an alternative to Pacific Blue®. eFluor® 450 emits at 445 nm and is excited with the Violet laser (405 nm). Please make sure that your instrument is capable of detecting this fluorochohome.^M

Excitation: 405 nm; Emission: 445 nm; Laser: Violet Laser.[^]M
Filtration: 0.2 μm post-manufacturing filtered.

Product Images For CD24 Monoclonal Antibody (eBioSN3 (SN3 A5-2H10)), eFluor™ 450, eBioscience™



CD24 Antibody (48-0247-42) in Flow
Staining of normal human peripheral blood cells with Mouse IgG1 K Isotype Control eFluor® 450 (Product # 48-4714-82) (blue histogram) or Anti-Human CD24 eFluor® 450 (purple histogram). Cells in the granulocyte gate were used for analysis.

View more figures on thermofisher.com

Immunocytochemistry (2)

BMC biology

The Z-cad dual fluorescent sensor detects dynamic changes between the epithelial and mesenchymal cellular states.

"Published figure using CD24 monoclonal antibody (Product # 48-0247-42) in Flow Cytometry"

Authors: Toneff MJ,Sreekumar A,Tinnirello A,Hollander PD,Habib S,Li S,Ellis MJ,Xin L,Mani SA,Rosen JM

Year
2016

Cancer cell international

Increased invasion and tumorigenicity capacity of CD44+/CD24- breast cancer MCF7 cells in vitro and in nude mice.

"Published figure using CD24 monoclonal antibody (Product # 48-0247-42) in Immunofluorescence"

Authors: Yan W,Chen Y,Yao Y,Zhang H,Wang T

Year
2013

Flow Cytometry (22)

Oncology letters

miR122/SENP1 axis confers stemness and chemoresistance to liver cancer through Wnt/catenin signaling.

"Published figure using CD24 monoclonal antibody (Product # 48-0247-42) in Flow Cytometry"

Authors: Dai J,Hao Y,Chen X,Yu Q,Wang B

Year
2023

Cancers

Immune Checkpoint Profiling in Humanized Breast Cancer Mice Revealed Cell-Specific LAG-3/PD-1/TIM-3 Co-Expression and Elevated PD-1/TIM-3 Secretion.

"Published figure using CD24 monoclonal antibody (Product # 48-0247-42) in Flow Cytometry"

Authors: Bruss C,Kellner K,Albert V,Hutchinson JA,Seitz S,Ortmann O,Brockhoff G,Wege AK

Year
2023

[View more Flow references on thermofisher.com](#)

More applications with references on thermofisher.com

For Research Use Only. Not for use in diagnostic procedures. Not for resale without express authorization. Products are warranted to operate or perform substantially in conformance with published Product specifications in effect at the time of sale, as set forth in the Production documentation, specifications and/or accompanying package inserts ("Documentation"). No claim of suitability for use in applications regulated by FDA is made. The warranty provided herein is valid only when used by properly trained individuals. Unless otherwise stated in the Documentation, this warranty is limited to one year from date of shipment when the Product is subjected to normal, proper and intended usage. This warranty does not extend to anyone other than the Buyer. Any model or sample furnished to Buyer is merely illustrative of the general type and quality of goods and does not represent that any Product will conform to such model or sample. NO OTHER WARRANTIES, EXPRESS OR IMPLIED, ARE GRANTED INCLUDING WITHOUT LIMITATION, IMPLIED WARRANTIES OF MERCHANTABILITY, FITNESS FOR ANY PARTICULAR PURPOSE, OR NON INFRINGEMENT. BUYER'S EXCLUSIVE REMEDY FOR NON-CONFORMING PRODUCTS DURING THE WARRANTY PERIOD IS LIMITED TO REPAIR, REPLACEMENT OF OR REFUND FOR THE NON-CONFORMING PRODUCT(S) AT SELLER'S SOLE OPTION. THERE IS NO OBLIGATION TO REPAIR, REPLACE OR REFUND FOR PRODUCTS AS THE RESULT OF (I) ACCIDENT, DISASTER OR EVENT OF FORCE MAJEURE, (II) MISUSE, FAULT OR NEGLIGENCE OF OR BY BUYER, (III) USE OF THE PRODUCTS IN A MANNER FOR WHICH THEY WERE NOT DESIGNED, OR (IV) IMPROPER STORAGE AND HANDLING OF THE PRODUCTS. Unless otherwise expressly stated on the Product or in the documentation accompanying the Product, the Product is intended for research only and is not to be used for any other purpose, including without limitation, unauthorized commercial uses, in vitro diagnostic uses, ex vivo or in vivo therapeutic uses, or any type of consumption by or application to human or animals.