

# Goat anti-Rabbit IgG (H+L) Secondary Antibody, HRP

Product Details	
Size	2 mL
Species Reactivity	Rabbit
Host/Isotype	Goat / IgG
Class	Polyclonal
Type	Secondary Antibody
Conjugate	HRP
Immunogen	Purified Rabbit IgG, whole molecule
Form	Liquid
Concentration	0.01 mg/mL
Purification	Antigen affinity chromatography
Storage buffer	PBS with proprietary stabilizer
Contains	no preservative
Storage conditions	4° C
RRID	AB_1185567

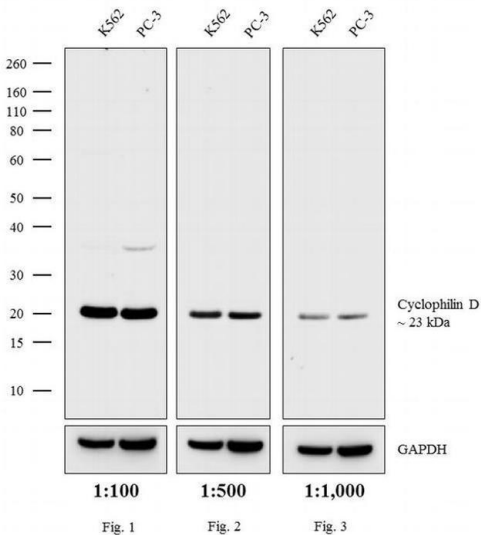
Applications	Tested Dilution	Publications
Western Blot (WB)	1:500-1:5,000	0 Publication
Immunohistochemistry (IHC)	1:6-1:60	0 Publication
ELISA (ELISA)	1:60-1:500	0 Publication
Miscellaneous PubMed (Misc)	-	0 Publication

## Product Specific Information

This antibody may cross-react with immunoglobulins from other species.

Working dilutions for Western blotting using SuperSignal West Substrates:  
SuperSignal West Pico Substrate - 1:250-1:1250  
SuperSignal West Dura Substrate - 1:600-1:3000  
SuperSignal West Femto Substrate - 1:1250-1:6000  
ECL Western Blotting Substrate - 1:20-1:125

Product Images For Goat anti-Rabbit IgG (H+L) Secondary Antibody, HRP

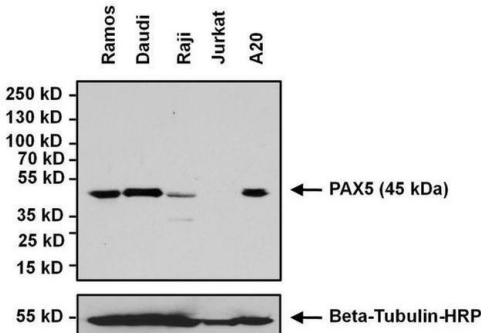


Rabbit IgG (H+L) Secondary Antibody (32460) in WB

Western blot analysis was performed on membrane enriched extracts (30 µg lysate) of K562 (Lane 1) and PC-3 (Lane 2). The blots were probed with Anti-Cyclophilin B Rabbit Polyclonal Antibody (Product # TAB1002, 0.5 µg/mL) and detected using Goat anti-Rabbit IgG (H+L) Secondary Antibody, HRP (Product # 32460) at dilutions 1:500 (Fig. 1), 1:2,000 (Fig. 2) and 1:5,000 (Fig. 3). A 23 kDa band corresponding to Cyclophilin B was observed. Known quantity of protein samples were electrophoresed using Novex® NuPAGE® 10 % Bis-Tris gel (Product # NP0302BOX), XCell SureLock™ Electrophoresis System (Product # EI0002) and Novex® Sharp Pre-Stained Protein Standard (Product # LC5800). Resolved proteins were then transferred onto a nitrocellulose membrane with iBlot® 2 Dry Blotting System (Product # IB21001). The membrane was probed with the relevant primary and secondary antibody after blocking with 5 % skimmed milk. Chemiluminescent detection was performed using Pierce™ ECL Western Blotting Substrate (Product # 32106).

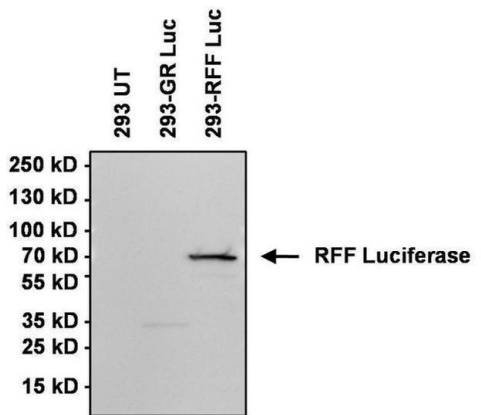
Rabbit IgG (H+L) Secondary Antibody (32460) in WB

Western blot analysis of PAX5 was performed by loading 75µg of whole cell lysates from PAX5-expressing B cell lymphoma-derived cell lines, negative control Jurkat cells, and 10 µL of PageRuler Plus Prestained Protein Ladder (Product # 26619) onto a 4-20% Tris-HCl polyacrylamide gel. Proteins were transferred to a PVDF membrane and blocked with 5% BSA/TBST for at least 1 hour. The membrane was probed with a PAX5 polyclonal antibody (Product # PA1-109) at a dilution of 1:1000 overnight at 4°C on a rocking platform, washed in TBS-0.1% Tween-20, and probed with a goat anti-rabbit HRP secondary antibody (Product # 32460) at a dilution of 1:500 (20 ng/mL) for one hour. Membranes were washed and chemiluminescent detection was performed using SuperSignal West Pico (Product # 34080, upper panel). To assay for protein loading (lower panel), the membrane was stripped with Restore PLUS Western Blot Stripping Buffer (Product # 46430), blocked with 5% BSA/TBST, and re-probed with an HRP-conjugated Beta Tubulin Loading Control Antibody (Product # MA5-16308-HRP) at a dilution of 1:1000 for 1 hour at room temperature. Chemiluminescent detection was performed using SuperSignal West Pico (Product # 34080).



Rabbit IgG (H+L) Secondary Antibody (32460) in WB

Western blot analysis of Red firefly luciferase (from the Japanese firefly *Luciola cruciata*) was performed by loading 10 µg of whole cell lysates from untransfected (UT) and Red firefly (RFF Luc) or Green Renilla (GR Luc) luciferase transfected 293 cell lines, and 10 µL of PageRuler Plus Prestained Protein Ladder (Product # 26619) onto a 4-20% Tris-HCl polyacrylamide gel. Proteins were transferred to a PVDF membrane and blocked with 5% BSA/TBST for 1 hour. The membrane was probed with a RFF luciferase polyclonal antibody (Product # PA1-179) at a dilution of 1:4000 overnight at 4°C on a rocking platform, washed in TBS-0.1% Tween-20, and probed with a pre-diluted goat anti-rabbit HRP secondary antibody (Product # 32460) at a dilution of 1:500 (20 ng/mL) for one hour. Membranes were washed and chemiluminescent detection was performed using SuperSignal West Pico (Product # 34080).



View more figures on [thermofisher.com](https://thermofisher.com)

Inhibition of vascular smooth muscle cell PERK/ATF4 ER stress signaling protects against abdominal aortic aneurysms. JCI Insight (2025)

Metformin Mitigates Bevacizumab-Evoked Endothelial Dysfunction through Activating MEK/ERK and PI3K /AKT Pathways. Tohoku J Exp Med (2024)

Characterization of the function of Adenovirus L4 gene products and their impact on AAV vector production. Mol Ther Methods Clin Dev (2024)

When do the pathological signs become evident? Study of human mesenchymal stem cells in MDPL syndrome. Aging (Albany NY) (2024)

Research on the TSPAN6 regulating the secretion of ADSCs-Exos through syntenin-1 and promoting wound healing. Stem Cell Res Ther (2024)

For Research Use Only. Not for use in diagnostic procedures. Not for resale without express authorization. Products are warranted to operate or perform substantially in conformance with published Product specifications in effect at the time of sale, as set forth in the Production documentation, specifications and/or accompanying package inserts ("Documentation"). No claim of suitability for use in applications regulated by FDA is made. The warranty provided herein is valid only when used by properly trained individuals. Unless otherwise stated in the Documentation, this warranty is limited to one year from date of shipment when the Product is subjected to normal, proper and intended usage. This warranty does not extend to anyone other than the Buyer. Any model or sample furnished to Buyer is merely illustrative of the general type and quality of goods and does not represent that any Product will conform to such model or sample. NO OTHER WARRANTIES, EXPRESS OR IMPLIED, ARE GRANTED INCLUDING WITHOUT LIMITATION, IMPLIED WARRANTIES OF MERCHANTABILITY, FITNESS FOR ANY PARTICULAR PURPOSE, OR NON INFRINGEMENT. BUYER'S EXCLUSIVE REMEDY FOR NON-CONFORMING PRODUCTS DURING THE WARRANTY PERIOD IS LIMITED TO REPAIR, REPLACEMENT OF OR REFUND FOR THE NON-CONFORMING PRODUCT(S) AT SELLER'S SOLE OPTION. THERE IS NO OBLIGATION TO REPAIR, REPLACE OR REFUND FOR PRODUCTS AS THE RESULT OF (i) ACCIDENT, DISASTER OR EVENT OF FORCE MAJEURE, (ii) MISUSE, FAULT OR NEGLIGENCE OF OR BY BUYER, (iii) USE OF THE PRODUCTS IN A MANNER FOR WHICH THEY WERE NOT DESIGNED, OR (iv) IMPROPER STORAGE AND HANDLING OF THE PRODUCTS. Unless otherwise expressly stated on the Product or in the documentation accompanying the Product, the Product is intended for research only and is not to be used for any other purpose, including without limitation, unauthorized commercial uses, in vitro diagnostic uses, ex vivo or in vivo therapeutic uses, or any type of consumption by or application to human or animals.