

CD28 Recombinant Mouse Monoclonal Antibody (CD28.2)

Product Details

Size	100 µg
Species Reactivity	Human
Host/Isotype	Mouse / IgG1, kappa
Expression system	Expi293
Class	Recombinant Monoclonal
Type	Antibody
Clone	CD28.2
Conjugate	Unconjugated
Form	Liquid
Concentration	1.0 mg/mL
Purification	Protein A/G
Storage buffer	PBS, pH 7.4
Contains	0.09% sodium azide
Storage conditions	Store at 4°C short term. For long term storage, store at -20°C, avoiding freeze/thaw cycles.
RRID	AB_2942253

Applications

Tested Dilution

Publications

Flow Cytometry (Flow)	0.025 µg/test	-
-----------------------	---------------	---

Product Specific Information

Recombinant antibodies are produced using specific genes that code for the desired antibodies. These genes are cloned into an expression vector and expressed in vitro. The advantages of recombinant antibodies include better specificity and lot-to-lot consistency.

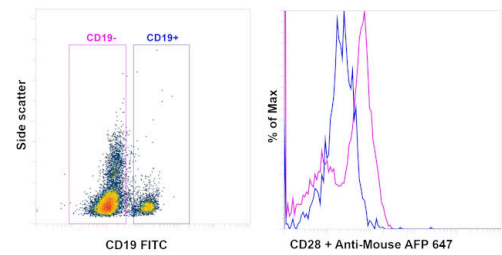
Description: The CD28.2 recombinant mouse monoclonal antibody reacts with the human CD28 molecule, a 44 kDa homodimer expressed by thymocytes, mature T cells and plasma cells. CD28 is a ligand for CD80 (B7-1) and CD86 (B7-2) and is a potent co-stimulator of T cells. Signaling through CD28 augments IL-2 and IL-2 receptor expression as well as cytotoxicity of CD3-activated T cells.

Applications Reported: The CD28.2 recombinant mouse monoclonal antibody has been reported for use in flow cytometric analysis. CD28.2 has also been reported in costimulation of T cells in in vitro functional assays.

Applications Tested: The CD28.2 recombinant mouse monoclonal antibody has been tested by flow cytometric analysis of normal human peripheral blood cells. This can be used at 0.025 µg/test. A test is defined as the amount (µg) of antibody that will stain a cell sample in a final volume of 100 µL. Cell number should be determined empirically but can range from 10⁵ to 10⁸ cells/test. It is recommended that the antibody be carefully titrated for optimal performance in the assay of interest.

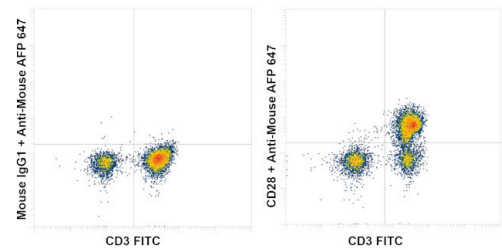
Filtration: 0.2 µm post-manufacturing filtered.

Product Images For CD28 Recombinant Mouse Monoclonal Antibody (CD28.2)



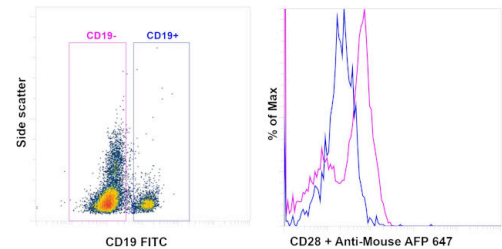
CD28 Antibody (740009M)

Antibody specificity was demonstrated by relative expression. CD28 Recombinant Mouse Monoclonal Antibody (CD28.2), purified (Product # 7400009M) specifically stains the CD19 negative (CD19-) subset of human PBMCs (pink histogram) while negligible CD28 staining is seen in CD19 positive (CD19+) subset of PBMCs (blue histogram). {RE}



CD28 Antibody (740009M)

Antibody specificity was demonstrated by relative expression. CD28 Recombinant Mouse Monoclonal Antibody (CD28.2), purified (Product # 7400009M) specifically stains the CD3 positive (CD3+) subset of human PBMCs while negligible CD28 staining is seen in CD3 negative (CD3-) subset of PBMCs. {RE}



CD28 Antibody (740009M) in Flow

CD28 expression was assessed within CD19 negative (CD19-) and CD19 positive (CD19+) subsets of human PBMCs by staining the cells with CD19 FITC (Product # 11-0199-42) and 0.025 µg of CD28 Recombinant Mouse Monoclonal Antibody (CD28.2), Purified (Product # 7400009M), followed by Goat anti-Mouse IgG (H+L) Alexa Fluor™ Plus 647 (Product # A55060). Specific CD28 staining was observed in CD19- subset (pink histogram) while negligible CD28 staining was seen in the CD19+ subset (blue histogram). Viable cells in the lymphocyte gate were used for analysis, as determined by Fixable Viability Dye eFluor™ 450 (Product # 65-0863-18). The flow cytometry data was acquired using Attune™ NxT Flow Cytometer (Product # A29004).

View more figures on thermofisher.com

For Research Use Only. Not for use in diagnostic procedures. Not for resale without express authorization. Products are warranted to operate or perform substantially in conformance with published Product specifications in effect at the time of sale, as set forth in the Production documentation, specifications and/or accompanying package inserts ("Documentation"). No claim of suitability for use in applications regulated by FDA is made. The warranty provided herein is valid only when used by properly trained individuals. Unless otherwise stated in the Documentation, this warranty is limited to one year from date of shipment when the Product is subjected to normal, proper and intended usage. This warranty does not extend to anyone other than the Buyer. Any model or sample furnished to Buyer is merely illustrative of the general type and quality of goods and does not represent that any Product will conform to such model or sample. NO OTHER WARRANTIES, EXPRESS OR IMPLIED, ARE GRANTED INCLUDING WITHOUT LIMITATION, IMPLIED WARRANTIES OF MERCHANTABILITY, FITNESS FOR ANY PARTICULAR PURPOSE, OR NON INFRINGEMENT. BUYER'S EXCLUSIVE REMEDY FOR NON-CONFORMING PRODUCTS DURING THE WARRANTY PERIOD IS LIMITED TO REPAIR, REPLACEMENT OF OR REFUND FOR THE NON-CONFORMING PRODUCT(S) AT SELLER'S SOLE OPTION. THERE IS NO OBLIGATION TO REPAIR, REPLACE OR REFUND FOR PRODUCTS AS THE RESULT OF (I) ACCIDENT, DISASTER OR EVENT OF FORCE MAJEURE, (II) MISUSE, FAULT OR NEGLIGENCE OF OR BY BUYER, (III) USE OF THE PRODUCTS IN A MANNER FOR WHICH THEY WERE NOT DESIGNED, OR (IV) IMPROPER STORAGE AND HANDLING OF THE PRODUCTS. Unless otherwise expressly stated on the Product or in the documentation accompanying the Product, the Product is intended for research only and is not to be used for any other purpose, including without limitation, unauthorized commercial uses, in vitro diagnostic uses, ex vivo or in vivo therapeutic uses, or any type of consumption by or application to human or animals.