

CD199 (CCR9) Monoclonal Antibody (eBioCW-1.2 (CW-1.2)), eFluor™ 450, eBioscience™

Product Details	
Size	100 µg
Species Reactivity	Mouse
Published Species	Mouse
Host/Isotype	Mouse / IgG2a
Recommended Isotype Control	Mouse IgG2a kappa Isotype Control (eBM2a), eFluor™ 450, eBioscience™
Class	Monoclonal
Type	Antibody
Clone	eBioCW-1.2 (CW-1.2)
Conjugate	eFluor™ 450
Excitation/Emission Max	405/445 nm
Form	Liquid
Concentration	0.2 mg/mL
Purification	Affinity chromatography
Storage buffer	PBS, pH 7.2
Contains	0.09% sodium azide
Storage conditions	4° C, store in dark, DO NOT FREEZE!
RRID	AB_10854574

Applications	Tested Dilution	Publications
Flow Cytometry (Flow)	1 µg/test	3 Publications

Product Specific Information

Description: The eBioCW-1.2 monoclonal antibody reacts with mouse CCR9 (CD199), which is the receptor for thymus-expressed chemokine (TECK). CCR9 is a member of the G protein coupled receptor (GPCR) supergene family, and is involved in trafficking of T cell progenitors within the thymus. CCR9 expression during thymocyte development commences at the double-negative (DN) 3 stage (CD4-CD8-CD25+CD44-), peaks in the double-positive (DP) stage (CD4+CD8+CD25-CD44-), and is down-regulated in committed CD4+ or CD8+ single-positive (SP) thymocytes. CCR9-deficient mice show a mild impairment in thymocyte development. In the periphery, CCR9 is thought to be expressed on naive CD8+ T cells, but not on naive CD4+ T cells.^M

Applications Reported: This eBioCW-1.2 (CW-1.2) antibody has been reported for use in flow cytometric analysis.^M

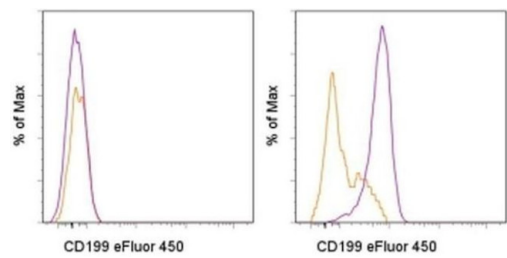
Applications Tested: This eBioCW-1.2 (CW-1.2) antibody has been tested by flow cytometric analysis or mouse thymocytes. This can be used at less than or equal to 1 µg per test. A test is defined as the amount (µg) of antibody that will stain a cell sample in a final volume of 100 µL. Cell number should be determined empirically but can range from 10^5 to 10^8 cells/test. It is recommended that the antibody be carefully titrated for optimal performance in the assay of interest.^M

eFluor® 450 is an alternative to Pacific Blue®. eFluor® 450 emits at 445 nm and is excited with the Violet laser (405 nm). Please make sure that your instrument is capable of detecting this fluorochoime.^M

Excitation: 405 nm; Emission: 445 nm; Laser: Violet Laser.^M

^M
Filtration: 0.2 µm post-manufacturing filtered.

Product Images For CD199 (CCR9) Monoclonal Antibody (eBioCW-1.2 (CW-1.2)), eFluor™ 450, eBioscience™



CD199 (CCR9) Antibody (48-1991-82) in Flow
Staining of BALB/c thymocytes with Anti-Mouse CD4 APC (Product # 17-0041-82), Anti-Mouse CD8a PerCP-eFluor® 710 (Product # 46-0081-82) and 0.5 µg of Mouse IgG2a K Isotype Control eFluor® 450 (Product # 48-4724-82) (left) or 0.5 µg of Anti-Mouse CD199 (CCR9) eFluor® 450 (right). Samples were gated on CD4 single positive (orange histogram) or CD4+CD8+ double positive cells (purple histogram).

3 References

Flow Cytometry (3)

Cell reports	Year 2020
T Cell-Intrinsic IRF5 Regulates T Cell Signaling, Migration, and Differentiation and Promotes Intestinal Inflammation.	Species Mouse
"48-1991 was used in Flow cytometry/Cell sorting to identify a previously undefined key role for T cell-intrinsic IRF5. In mice, IRF5 in CD4+ T cells promotes Th1- and Th17-associated cytokines and decreases Th2-associated cytokines."	
Authors: Yan J,Pandey SP,Barnes BJ,Turner JR,Abraham C	
Nature communications	Year 2016
Limited clonal relatedness between gut IgA plasma cells and memory B cells after oral immunization.	
"Published figure using CD199 (CCR9) monoclonal antibody (Product # 48-1991-82) in Flow Cytometry"	
Authors: Bemark M,Hazanov H,Strömberg A,Komban R,Holmqvist J,Köster S,Mattsson J,Sikora P,Mehr R,Lycke NY	

[View more Flow references on thermofisher.com](#)

For Research Use Only. Not for use in diagnostic procedures. Not for resale without express authorization. Products are warranted to operate or perform substantially in conformance with published Product specifications in effect at the time of sale, as set forth in the Production documentation, specifications and/or accompanying package inserts ("Documentation"). No claim of suitability for use in applications regulated by FDA is made. The warranty provided herein is valid only when used by properly trained individuals. Unless otherwise stated in the Documentation, this warranty is limited to one year from date of shipment when the Product is subjected to normal, proper and intended usage. This warranty does not extend to anyone other than the Buyer. Any model or sample furnished to Buyer is merely illustrative of the general type and quality of goods and does not represent that any Product will conform to such model or sample. NO OTHER WARRANTIES, EXPRESS OR IMPLIED, ARE GRANTED INCLUDING WITHOUT LIMITATION, IMPLIED WARRANTIES OF MERCHANTABILITY, FITNESS FOR ANY PARTICULAR PURPOSE, OR NON-INFRINGEMENT. BUYER'S EXCLUSIVE REMEDY FOR NON-CONFORMING PRODUCTS DURING THE WARRANTY PERIOD IS LIMITED TO REPAIR, REPLACEMENT OF OR REFUND FOR THE NON-CONFORMING PRODUCT(S) AT SELLER'S SOLE OPTION. THERE IS NO OBLIGATION TO REPAIR, REPLACE OR REFUND FOR PRODUCTS AS THE RESULT OF (I) ACCIDENT, DISASTER OR EVENT OF FORCE MAJEURE, (II) MISUSE, FAULT OR NEGLIGENCE OF OR BY BUYER, (III) USE OF THE PRODUCTS IN A MANNER FOR WHICH THEY WERE NOT DESIGNED, OR (IV) IMPROPER STORAGE AND HANDLING OF THE PRODUCTS. Unless otherwise expressly stated on the Product or in the documentation accompanying the Product, the Product is intended for research only and is not to be used for any other purpose, including without limitation, unauthorized commercial uses, in vitro diagnostic uses, ex vivo or in vivo therapeutic uses, or any type of consumption by or application to human or animals.