

# Prolific driver

FOR WINDOWS 11 PRO

**VOR BEGINN ALLER ARBEITEN ANLEITUNG LESEN!  
READ THE INSTRUCTIONS PRIOR TO PERFORMING ANY TASK!**



Installation Prolific Treiber unter WIN 11 Pro  
Installing Prolific drivers for WIN 11 Pro



<b>1</b>	<b>EN Replacing drivers for Prolific PL2303TA chips. . . . .</b>	<b>3</b>
1.1	Disabling automatic driver downloads via Windows updates. . . . .	3
1.2	Uninstalling the non-functioning driver. . . . .	4
1.3	Install the working driver. . . . .	6
<b>2</b>	<b>DE Austausch der Treiber für Prolific PL2303TA Chips. . . . .</b>	<b>9</b>
2.1	Deaktivieren des automatischen Downloads von Treibern über Windows updates. . . . .	9
2.2	Deinstallieren des nicht mehr funktionierenden Treibers. . . . .	10
2.3	Richtigen Treiber installieren. . . . .	12

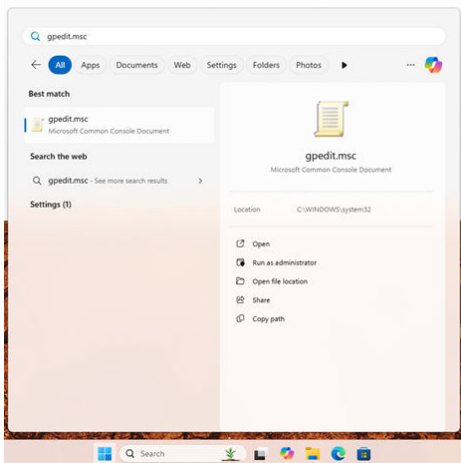
## 1 EN Replacing drivers for Prolific PL2303TA chips

### 1.1 Disabling automatic driver downloads via Windows updates

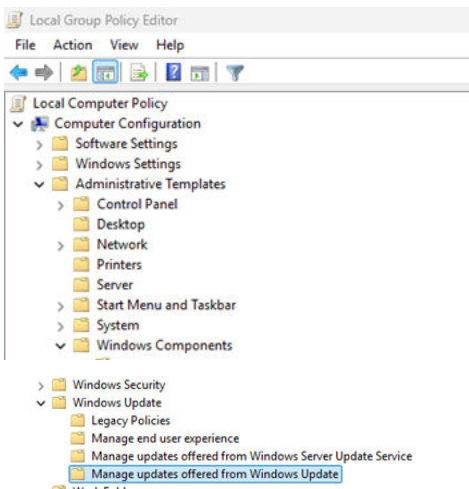


Driver installations require administrator rights.

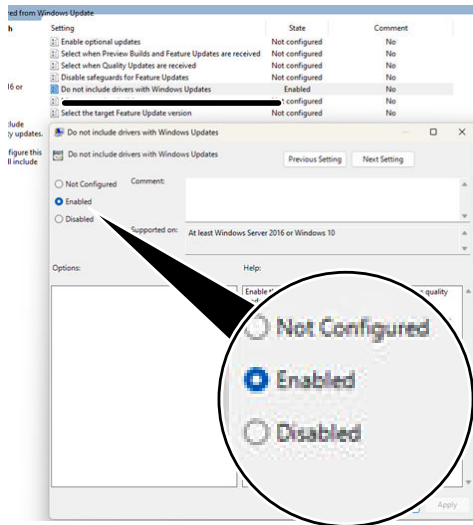
The following steps can only be performed with Windows 11 Pro.



1. → Open the Start menu and enter gpedit.msc.



2. → Go to Computer Configuration – Administrative Templates – Windows Components – Windows Update – Manage updates offered by Windows Update.

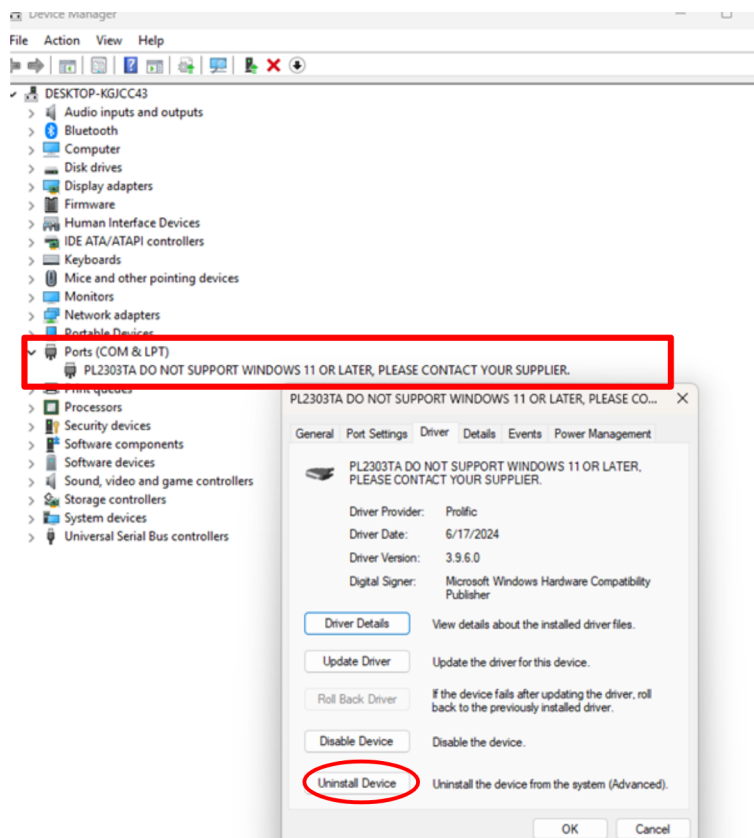


3. → Select "Do not Include drivers with Windows Update" and set this rule to "Enabled".

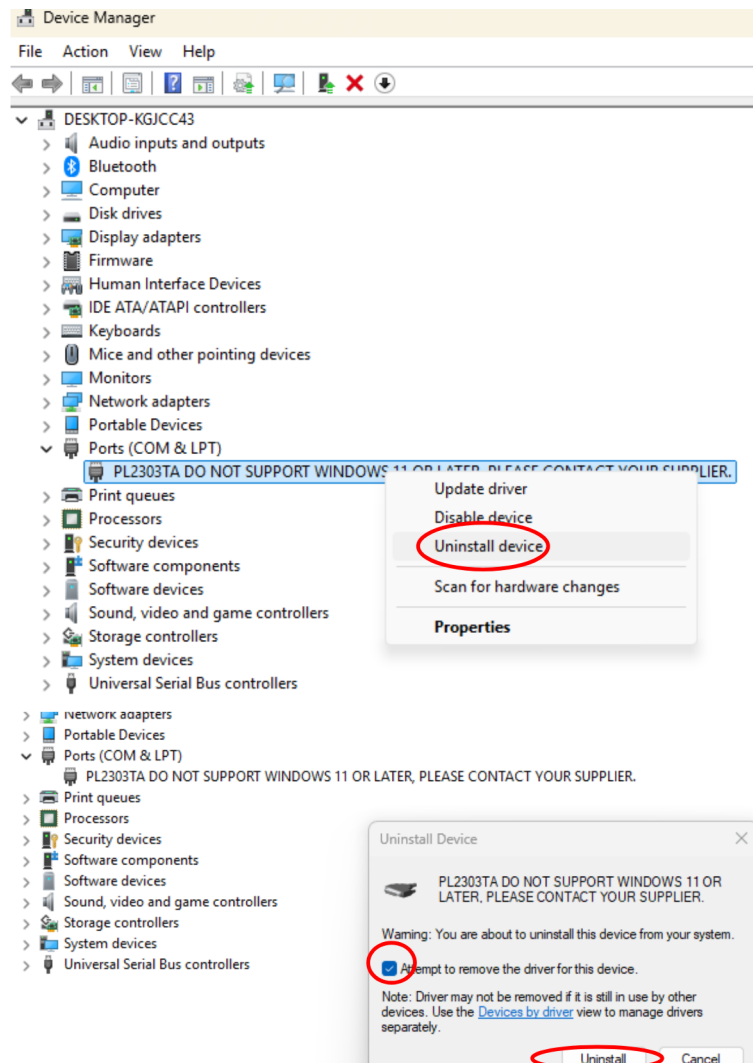
## 1.2 Uninstalling the non-functioning driver



You only need to follow these steps if you have installed Prolific drivers in advance. If not, continue with Chapter 1.3.



1. → Open Device Manager, switch to Ports, Prolific drivers.

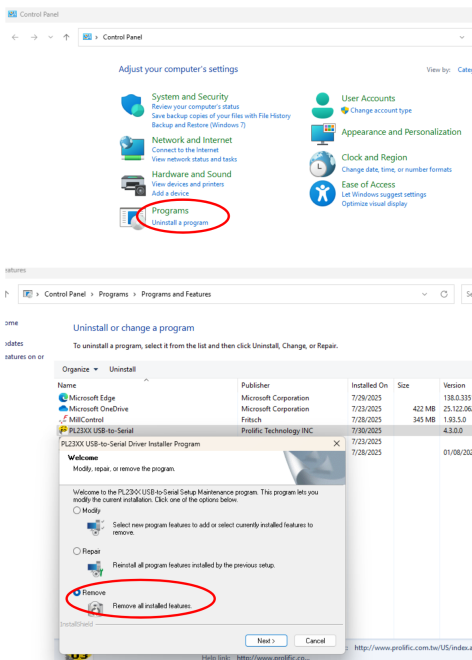


2. → Right-click on the driver and select "Uninstall Device", tick the box next to "Attempt to remove the driver for this device" and then click on „Uninstall“.



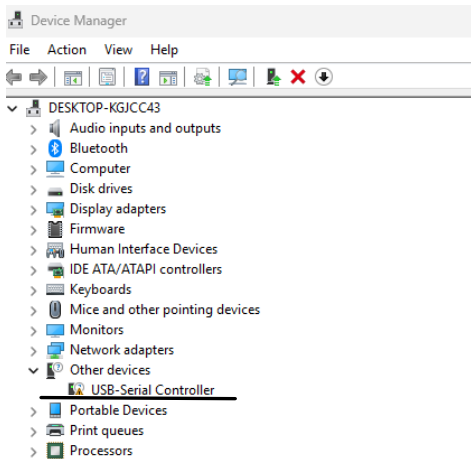
# EN Replacing drivers for Prolific PL2303TA chips

3. The driver may need to be uninstalled in the Control Panel. Go to "Control Panel" - "Uninstall a Programme", select the Prolific driver - "Uninstall" - "Remove".

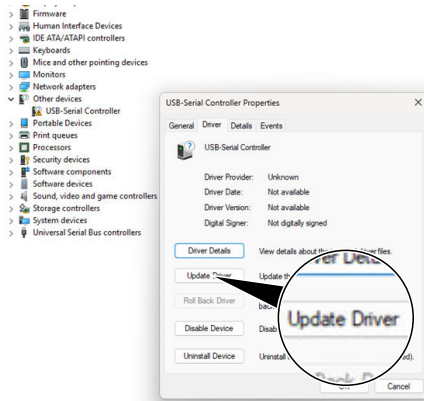


## 1.3 Install the working driver

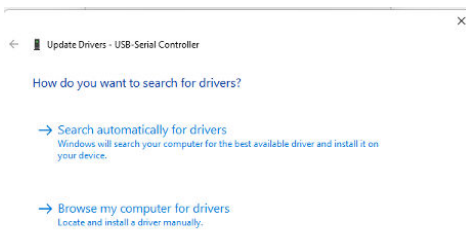
1. If the machine was connected via USB during the entire process, disconnect the USB cable and reconnect it.
2. Switch to Device Manager - Other Devices - USB Serial Controller.



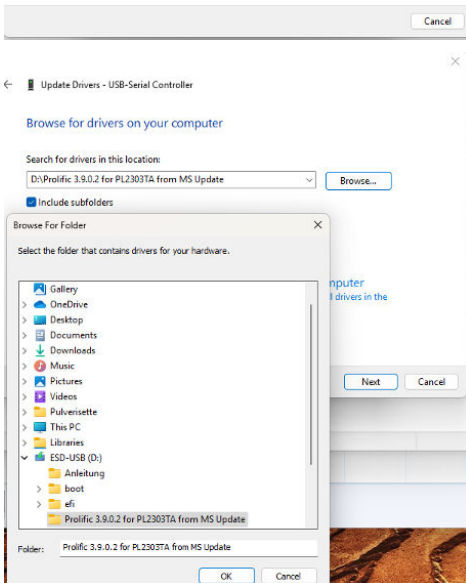
3. Open USB Serial Controller and select "Update Driver".



4. Select „Browse my Computer for Drivers“.

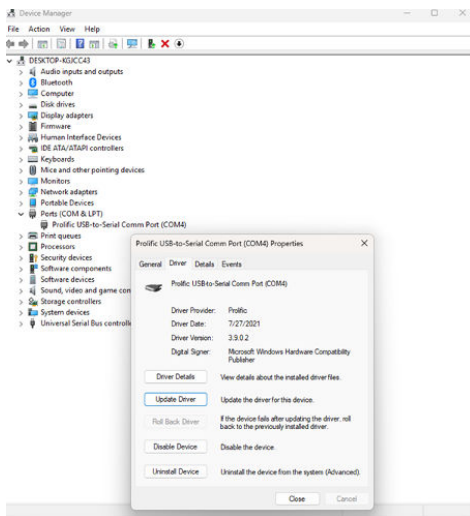


5. Select the location of the driver.





## EN Replacing drivers for Prolific PL2303TA chips



6. → Confirm with „OK“.  
→ The correct driver is now installed.

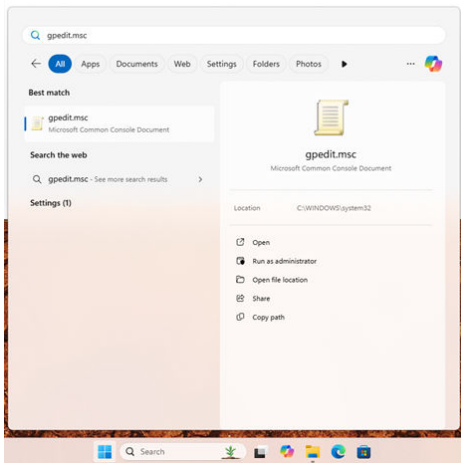
## 2 DE Austausch der Treiber für Prolific PL2303TA Chips

### 2.1 Deaktivieren des automatischen Downloads von Treibern über Windows updates

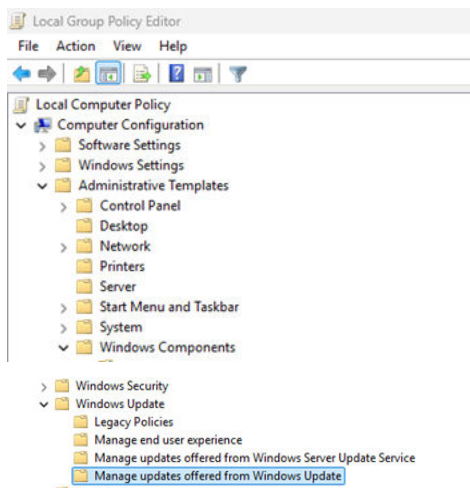


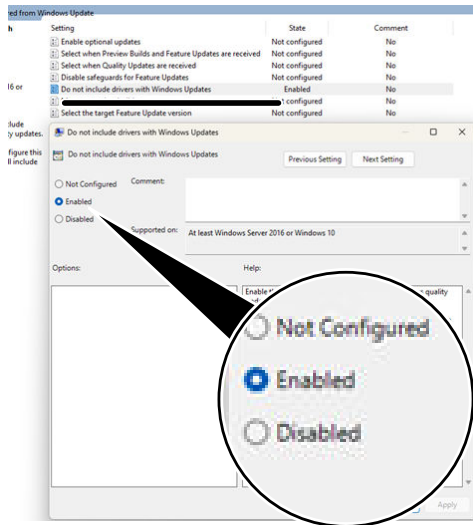
Treiberinstallationen benötigen Administrator-Rechte.  
Folgende Schritte sind nur mit Windows 11 Pro durchzuführen.

1. Startmenü öffnen und gpedit.msc eingeben.



2. Gehe zu Computer Configuration - Administrative Templates - Windows Components - Windows Update - Manage Updates offered from Windows Update.



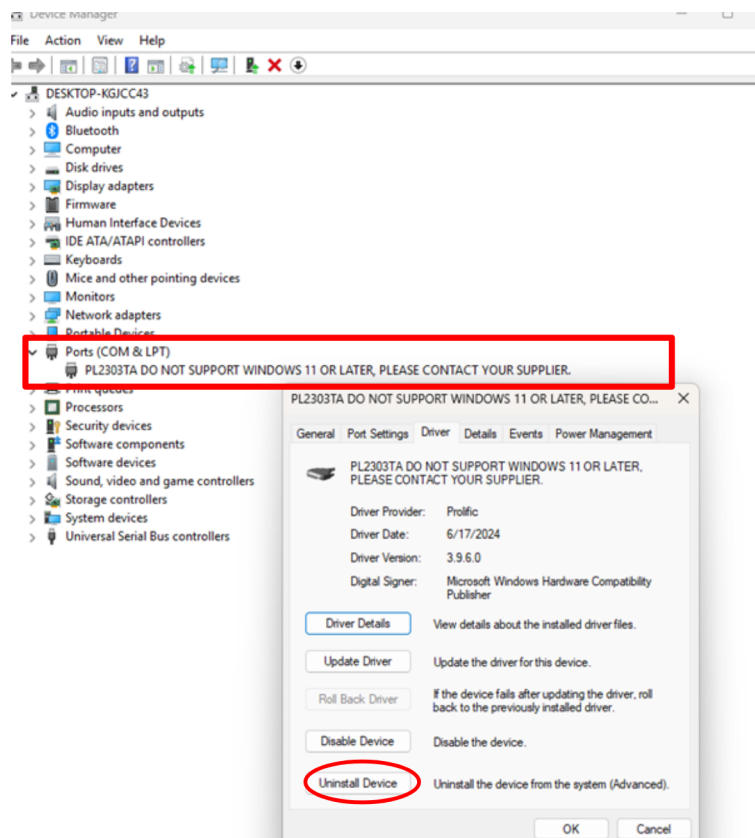


3. ➔ Auswählen von “Do not Include drivers with Windows Update” und diese Regel auf „Enabled“ setzen.

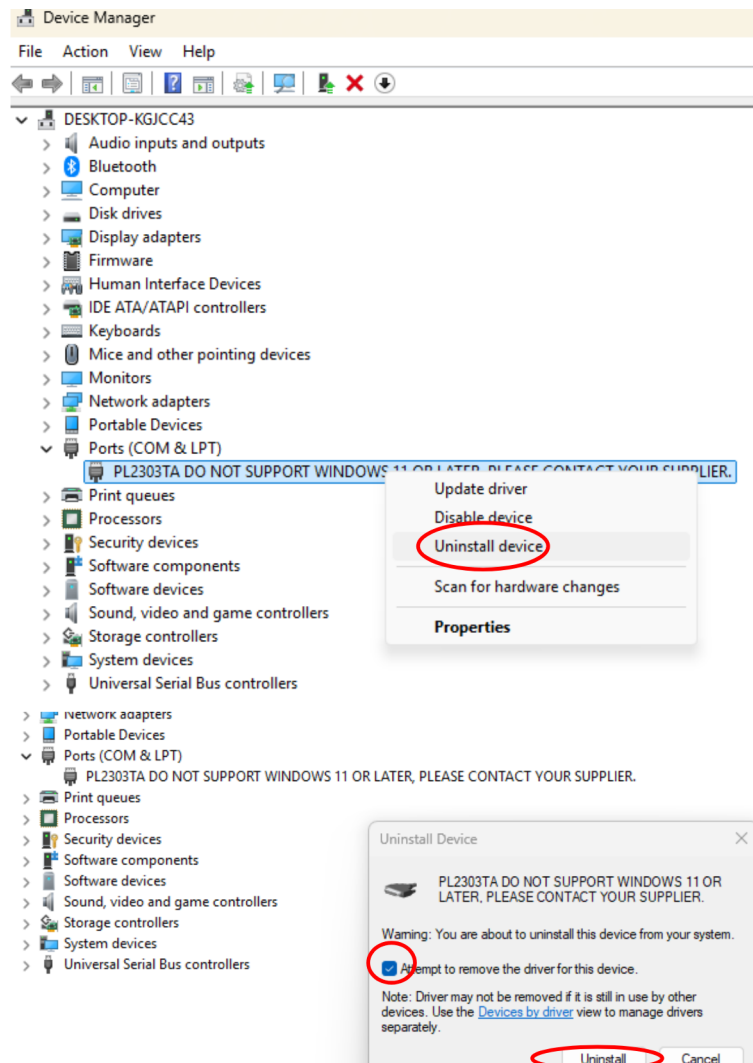
## 2.2 Deinstallieren des nicht mehr funktionierenden Treibers



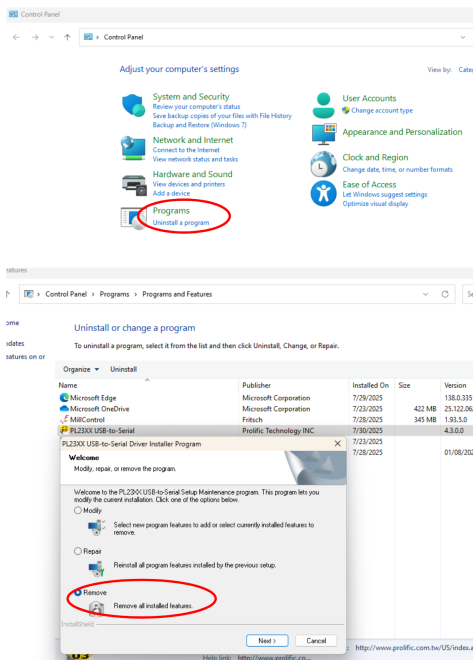
Diese Schritte benötigen Sie nur, sollten Sie vorab Prolific Treiber installiert haben. Wenn nicht, fahren Sie mit dem Kapitel 1.3 fort.



1. ➔ Gerätemanager öffnen, wechseln zu Ports, Prolific Treiber.



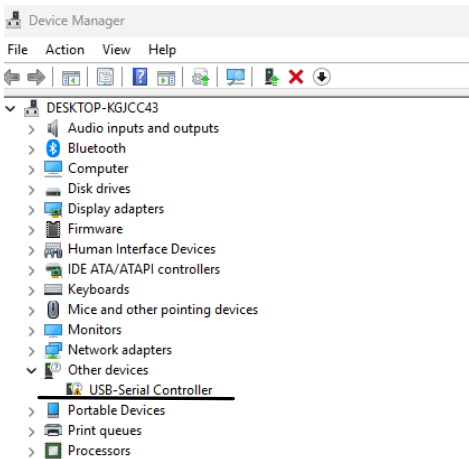
2. → Rechte Maustaste auf den Treiber und „Uninstall Device“ anklicken, Haken setzen bei dem Punkt „Attempt to remove the driver for this device“ und danach auf „Uninstall“ klicken.

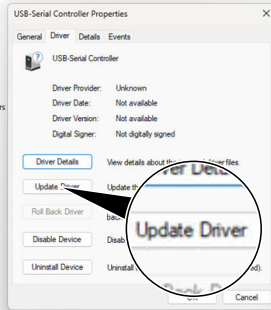
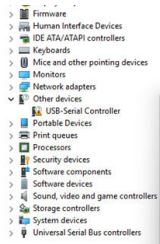


3. Der Treiber muss evtl. noch in der Systemsteuerung deinstalliert werden. Wechsel zur „Systemsteuerung“ - „Uninstall a Program“, Prolific Treiber auswählen - „Uninstall“ - „Remove“.

## 2.3 Richtigen Treiber installieren

1. Falls die Maschine während des ganzen Vorgangs per USB angeschlossen war, einmal USB Kabel abziehen und neu verbinden.
2. Wechsel zum Gerätemanager - Other Devices - USB Serial Controller.

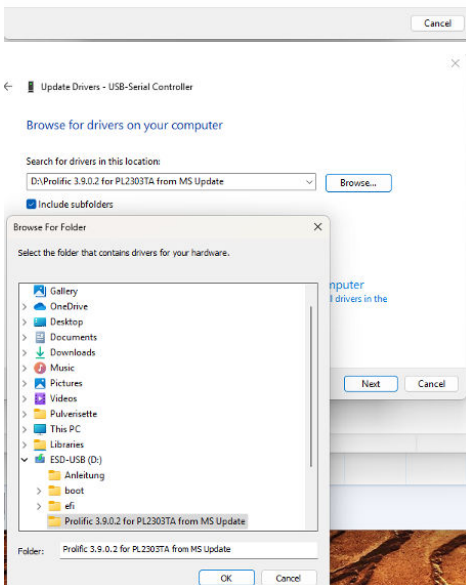




3. → USB Serial Controller öffnen und „Update Driver“ auswählen.



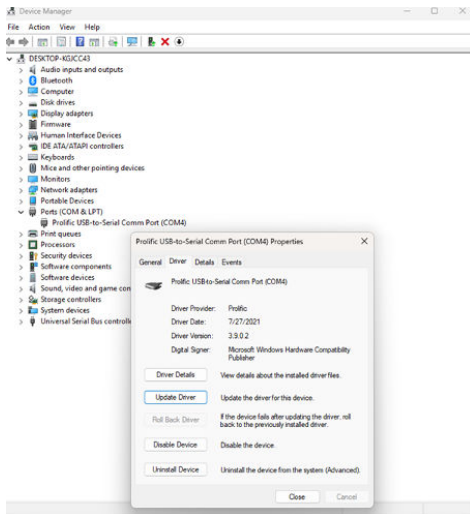
4. → „Browse my Computer for Drivers“ auswählen.



5. → Speicherort des Treibers auswählen.



## DE Austausch der Treiber für Prolific PL2303TA Chips



6. Mit „OK“ bestätigen.  
➔ Der richtige Treiber ist nun installiert.





© 2026

Fritsch GmbH

Industriestraße 8

D - 55743 Idar-Oberstein

Telefon: +49 6784 70-0

E-Mail: [info@fritsch.de](mailto:info@fritsch.de)

Internet: [www.fritsch.de](http://www.fritsch.de)