

# easySpiral<sup>®</sup>

The world's fastest Spiral<sup>®</sup> plater



interscience

# Our quality for your lab

- Designer and manufacturer for microbiology
- R&D leadership for innovative and reliable products
- Worldwide distribution network in more than 130 countries
- Made in France



**interscience**  
R&D center and manufacturing plant  
Mourjou FRANCE

## Spiral<sup>®</sup> method: 35 years experience

The Spiral<sup>®</sup> method was designed in 1973 to automate the routine work of bacterial enumeration by Dr. Ed Campbell, researcher at the FDA (Food & Drug Administration). With François Jalenques, friend and founder of **interscience**, they patented an updated method in 1992.

Since then Spiral<sup>®</sup> automatic platers have been a reference for applications in food microbiology, medical bacteriology, research on food preservatives or cosmetological factors in compliance with the, ISO 7218, ISO 4833-2, FDA-BAM and AOAC 977.27.

**interscience** has proudly launched the 3<sup>rd</sup> generation of Spiral<sup>®</sup> platers with **easySpiral<sup>®</sup>** and **easySpiral Pro<sup>®</sup>**.



François Jalenques & Dr. Ed Campbell



**Spiral<sup>®</sup> DS**  
First Spiral Plater<sup>®</sup>  
1979



**Spiral<sup>®</sup> DS+**  
Automatic Spiral Plater<sup>®</sup>  
1996



**easySpiral<sup>®</sup>/easySpiral Pro<sup>®</sup>**  
World fastest Spiral<sup>®</sup> platers  
Worldwide patented  
2010

# What is Spiral<sup>®</sup> method?

With **easySpiral<sup>®</sup>** automatic plater, increase your lab capacity with a counting range from 100 to  $1 \times 10^7$  CFU/mL on **one single Petri dish** without prior dilution.

**Manual plating method**

This method requires repetitive actions: at least **4 dilutions** and **4 successive platings** are necessary to obtain one good and readable Petri dish.

1<sup>st</sup> Petri dish  
2<sup>nd</sup> Petri dish  
3<sup>rd</sup> Petri dish  
4<sup>th</sup> Petri dish

Incubation  
Incubation  
Incubation  
Incubation

OK

**Automatic Spiral<sup>®</sup> method**

With this method, make your analyses on **1 single Petri dish!**

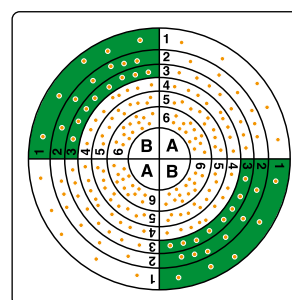
Interscience

Incubation  
OK

- From 100 to  $1 \times 10^7$  CFU/mL on 1 single Petri dish
- Up to 75% less consumables
- Full plating cycle in 25 seconds!

## How to count?

With the **Spiral<sup>®</sup>** method, a **logarithmically decreasing** volume of sample is dispensed on the surface of a rotating Petri dish in an **Archimedes spiral**. The volume is calibrated and known at every point of the Petri dish. Bacterial concentration is determined by dividing the number of colonies found by the volume dispensed in the same sector of the dish.



For manual counting, count the colonies in the first A or B outer segment and **reach a minimum of 20 colonies**. Repeat the same operation on the opposite side of the Petri dish.

### Manual colony counting



**Scan<sup>®</sup> 100**

with Spiral<sup>®</sup>  
counting grid



or

### Automatic colony counting



**Scan<sup>®</sup> 300**  
**Scan<sup>®</sup> 500**  
**Scan<sup>®</sup> 1200**  
**Scan<sup>®</sup> 4000**



# easySpiral<sup>®</sup> revolutionary efficiency

The new easySpiral<sup>®</sup> patented technology, exclusively developed by **interscience**, allows the automatic plating of your sample on a Petri dish in only 25 seconds with a decreasing concentration (counting range: from 100 to  $1 \times 10^7$  CFU/mL).

A completely new architecture with a **revolutionary rotating arm** allows a **full cycle in 25 seconds** (disinfection, sample-taking and plating). All the liquid flows are visible. No exterior maintenance is needed.

easySpiral<sup>®</sup> is equipped with an innovative unique stylus cleaning device, which guarantees a perfect cleaning and disinfection of the stylus, with **no risk of cross-contamination**.

## Autoclavable bottles

Secure and easy connection  
by CPC Connectors

## 2 L bottles

600 cleaning cycles

## Auto disinfection

The inside and outside of the stylus  
are cleaned by overflow technology  
No cross contamination

**PATENTED**

## Sampling area

Fast and accurate filling in a sterile beaker  
DB50, sterile and autoclavable

## Stainless steel housing

Compact, 40 cm wide  
Can be used inside and outside a laminar flow





**easySpiral®** ensures fast sample platings with 99.5% repeatability and reproducibility, and reliable analyses by harmonizing the work of the whole lab team.

### Cleaning liquid sensor

Alarm when the bottle is empty

### Rotating arm architecture

Automatic full cycle: 25 seconds

**PATENTED**

### Modular Petri dish stand

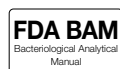
Switch from 90 to 150 mm Petri dishes

### Intuitive control panel

Easy to use  
No training needed

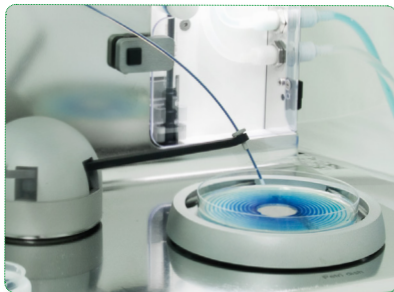
### Monthly cleaning

1 button to access the intensive, periodic cleaning cycle (10 mn approx.)



Product made for INTERSCIENCE by Interlab, an ISO 9001 certified company.

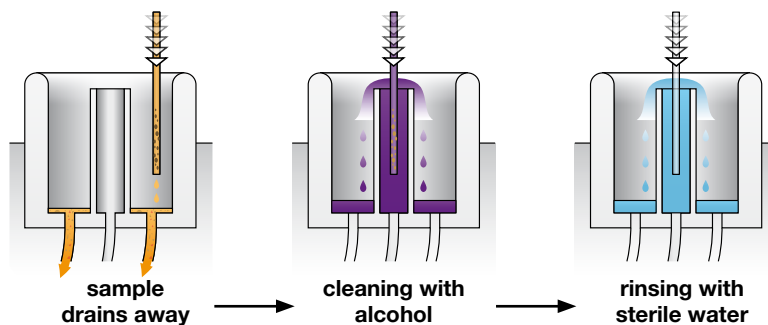
Delivering the fastest cycle time ever, **easySpiral<sup>®</sup>** has an impressive rotating arm architecture, new patented disinfection system avoiding risks of cross-contamination and full traceability of the operations with a counting range from 100 to 1x10<sup>7</sup> CFU/mL on **1 Petri dish**.



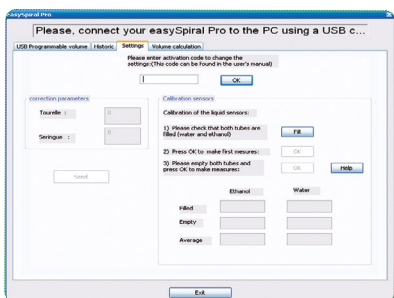
## The fastest Spiral<sup>®</sup> plater: only 25 seconds for a full cycle!

- 25 seconds for a full cycle (disinfection, sample-taking and plating)
- Rotating arm with high speed movement
- Patented electronic robot system
- 10 Petri dishes plated in less than 2 mn (with the same sample)

## Overflow technology\*



- No cross-contamination
- Unique patented disinfection system by overflow
- 600 cleanings without changing bottles (2L)



## USB programmable volume & traceability\*\*

- Easy PC connectivity via USB
- From 10 to 1000 microliters programmable volumes
- 3 preset plating modes
- Monitoring software with traceability



## Consumables reduced up to 75%!

- Reduced budget for consumables
- No specific consumables needed
- More space in your laboratory



\*Scientific study available upon request

\*\*On easySpiral Pro<sup>®</sup>

# Plate & Count System<sup>®</sup> + dataLink<sup>™</sup>



**Plate & Count System<sup>®</sup> + dataLink<sup>™</sup>** offer quick and reliable results from automatic plating to colony counting with total traceability.

- **GREAT SAVINGS:** Up to 75 % savings in time, consumables and space
- **QUICK:** Full plating cycle in 25 seconds and counting in 1 click. No need of manual data input as the Scan<sup>®</sup> colony counter retrieves it and adjusts automatically.
- **RELIABLE:** Repeatable and reproducible results up to 98 %
- **FULL TRACEABILITY WITH dataLink<sup>™</sup>:** Automatic saving of data and results

## How does it work ?



### STEP 1

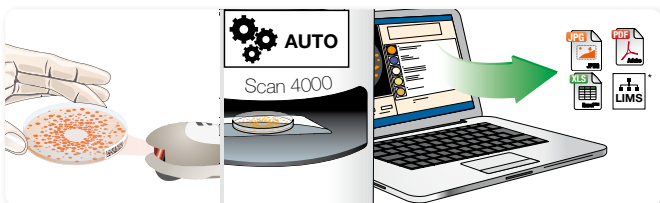
Plate with easySpiral<sup>®</sup>.  
easySpiral<sup>®</sup> software collects the plating data.



### STEP 2

Print the label with Datamatrix code. Stick the label on the plated Petri dish and place in the incubator.

... 24-72 h incubation



### STEP 3

Once the colonies have grown, scan the Datamatrix code. The Scan<sup>®</sup> colony counter automatically adjusts its settings thanks to the Datamatrix label's data. Click on "COUNT". Export the data.

\* Please check LIMS compatibility



**DOWNLOAD  
SCAN<sup>®</sup> SOFTWARE**

[www.interscience.com](http://www.interscience.com)





# Technical specifications

	easySpiral®	easySpiral Pro®	
<b>Reference</b>	<b>412 000</b>	<b>413 000</b>	
<b>OVERVIEW</b>	Controlled by a microprocessor	✓	✓
	All stainless steel	✓	✓
	Disinfection process	✓	✓
	Filling time and volume programmable via USB	-	✓
	Sampling from beakers (DB50)	✓	✓
<b>SPECIFICATIONS</b>	Syringe capacity	1 000 µL	1 000 µL
	Preset dispensed volumes	50 µL and 100 µL	50 µL, 100 µL and 200 µL
	Counting range	300 CFU/mL to 1.3x10 <sup>5</sup> CFU/mL	100 CFU/mL to 1x10 <sup>7</sup> CFU/mL
	Time for 1 sample intake + 1 disinfection + 1 plating	25 s	25 s
	Pressure in the stylus	Up to 8 bars	Up to 8 bars
	Autonomy in disinfection (in normal mode)	1000 cycles (2 L bottles)	1000 cycles (2 L bottles)
	Autonomy in distilled water (in normal mode)	600 cycles (2 L bottles)	600 cycles (2 L bottles)
	Successive plating capacity with the same sample	Up to 20 Petri dishes (50 µL)	Up to 20 Petri dishes (50 µL)
	Exponential plating mode (Spiral mode): Petri dish diameters Ø available	90 mm	90 mm and 150 mm
	Circle plating mode: Petri dish diameters Ø available	90 mm	90 mm and 150 mm
	Constant plating mode: Petri dish diameters Ø available	-	90 mm and 150 mm
	Programmable dispensed volume (via USB)	-	10 µL to 1000 µL
	Voltage - Frequencies	100-240 V~ 50-60 Hz	100-240 V~ 50-60 Hz
	Warranty	1 year	1 year
	Spare parts availability	10 years	10 years
In compliance with	ISO 7218, ISO 4833-2, FDA BAM (Bacteriological Analytical Manual) and AOAC 977.27	ISO 7218, ISO 4833-2, FDA BAM (Bacteriological Analytical Manual) and AOAC 977.27	
Traceability	Excel™, LIMS, dataLink®	Excel™, LIMS, dataLink®	

## APPLICATIONS

- Microbiological analyses
- Food quality control
- Bacterial cinetics
- MIC of antibiotics
- Challenge test: cosmetics control
- Pharmaceutical control

**easySpiral®:** 1 plateau pour boîtes de Petri Ø 90 mm (monté par défaut sur l'appareil), 1 flacon de colorant bleu, 1 seringue avec tube silicone, 1 grille de comptage Spiral pour boîte de Petri de Ø 90 mm, 1 support récipient pour test, 1 lot de 2 filtres, 1 000 godets DB50, 1 pot de détergent EnzyClear, 4 kits de raccordement pour bouteille GL45, 1 kit de raccordement double sortie pour bouteille GL45, 1 stylet, 1 câble d'alimentation, 1 manuel d'utilisation, 1 notice simplifiée EnzyClear, 1 certificat de conformité/carte de garantie

**easySpiral Pro®:** 1 plateau pour boîtes de Petri Ø 90 mm (monté par défaut sur l'appareil), 1 flacon de colorant bleu, 1 seringue avec tube silicone, 1 grille de comptage Spiral pour boîte de Petri de Ø 90 mm, 1 support récipient pour test, 1 lot de 2 filtres, 1 logiciel de supervision, 1 câble USB A/B, 1 grille de comptage Spiral pour boîte de Petri de Ø 150 mm, 1 000 godets DB50, 1 pot de détergent EnzyClear, 4 kits de raccordement pour bouteille GL45, 1 kit de raccordement double sortie pour bouteille GL45, 1 stylet, 1 plateau pour boîtes de Petri Ø 150 mm, 1 câble d'alimentation, 1 manuel d'utilisation, 1 notice simplifiée EnzyClear, 1 certificat de conformité/carte de garantie

## Accessories



### Housing protection for platers

Transparent housing for working outside laminar flow

**Ref 413 001**



### dataLink™

Petri dish labeling solution

**Ref 410 100**



### DB 50 beakers

1 000 sterile beakers for Spiral® platers

**Ref 415 100**



### Bar-code reader

Barcode reader for traceability

**Ref 522 000**

Your local distributor

### PARIS

Phone: +33 (0)1 34 62 62 61 Email: info@interscience.com

### FRANKFURT

Phone: +49 611 7238 7770 Email: sales.germany@interscience.com

### BOSTON

Phone: +1 781 937 0007 Email: sales.usa@intersciencelab.com

### SHANGHAI

Phone: +86 (0)21-64739390 Email: sales.china@interscience.cn

### SINGAPORE

Phone: +65 6977 7232E-mail: sales.asia@interscience.com

### TOKYO

Phone: +81 3 6712 9715 E-mail: sales.japan@interscience.com