

For Research Use Only

ETV4 Polyclonal antibody

Catalog Number:10684-1-AP

Featured Product

31 Publications



Basic Information

Catalog Number: 10684-1-AP	GenBank Accession Number: BC007242	Purification Method: Antigen affinity purification
Size: 150ul , Concentration: 750 ug/ml by Nanodrop;	GeneID (NCBI): 2118	Recommended Dilutions: WB: 1:500-1:1000
Source: Rabbit	UNIPROT ID: P43268	
Isotype: IgG	Full Name: ets variant 4	
Immunogen Catalog Number: AG0984	Calculated MW: 54 kDa	
	Observed MW: 61-65 kDa	

Applications

Tested Applications: WB, ELISA	Positive Controls: WB : BxPC-3 cells,
Cited Applications: WB, IHC, IF, CHIP	
Species Specificity: human	
Cited Species: human, chicken	

Background Information

ETS translocation variant 4 (ETV4), also named as E1A-F or PEA3, is 484 amino acid protein, which contains one ETS DNA-binding domain and belongs to the ETS family. The calculated molecular weight of ETV4 protein is 54 kDa, but the phosphorylated ETV4 is a 54-61 kDa protein. ETV4 as a transcription activator localizes in the nucleus and binds to the enhancer of the adenovirus E1A gene.

Notable Publications

Author	Pubmed ID	Journal	Application
Aoi Komatsu	34685592	Cells	WB,IHC
Guangying Yang	35682694	Int J Mol Sci	WB,IF
Eunice Cho	33789117	Cell Rep	WB

Storage

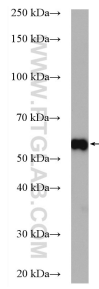
Storage:
Store at -20°C. Stable for one year after shipment.
Storage Buffer:
PBS with 0.02% sodium azide and 50% glycerol, pH7.3
Aliquoting is unnecessary for -20°C storage

*** 20ul sizes contain 0.1% BSA

For technical support and original validation data for this product please contact:
T: 1 (888) 4PTGLAB (1-888-478-4522) (toll free in USA), or 1(312) 455-8498 (outside USA)
E: proteintech@ptglab.com
W: ptglab.com

This product is exclusively available under Proteintech Group brand and is not available to purchase from any other manufacturer.

Selected Validation Data



BxPC-3 cells were subjected to SDS PAGE followed by western blot with 10684-1-AP (ETV4 antibody) at dilution of 1:600 incubated at room temperature for 1.5 hours.